

# TRANSPORTATION ASSET MANAGEMENT PEER EXCHANGE MINNEAPOLIS, MINNESOTA



**Jim Lewis**  
Manager, NJDOT Statewide Strategies



# NJDOT

## ASSET MANAGEMENT PLAN

 Spring 2010  
New Jersey Department of Transportation





# NATIONAL HIGHWAY SYSTEM ROAD LENGTH - 2013

## MILES BY OWNERSHIP

October 21, 2014

TABLE HM-40

STATE	URBAN & RURAL										
	STATE HIGHWAY AGENCY	%	COUNTY	%	TOWN, TOWNSHIP, MUNICIPAL (1)	%	OTHER JURISDICTIONS (2)	%	FEDERAL AGENCY (3)	%	TOTAL
California	8,516	60.77%	825	5.89%	4,670	33.33%	2	0.02%	-		14,014
New Jersey	1,881	63.35%	592	19.94%	87	2.91%	410	13.79%	-		2,969
Massachusetts	1,900	64.03%	-		1,003	33.79%	64	2.16%	1	0.03%	2,967
Arizona	2,902	70.79%	142	3.47%	1,039	25.36%	-		16	0.38%	4,099
New York	5,087	71.65%	319	4.49%	1,036	14.60%	657	9.26%	-		7,099
Oklahoma	3,449	77.85%	26	0.58%	358	8.08%	598	13.49%	-		4,430
Washington	3,577	78.43%	174	3.81%	802	17.58%	8	0.18%	-		4,561
Michigan	5,227	81.32%	762	11.85%	439	6.83%	-		-		6,428
New Hampshire	761	81.74%	-		77	8.29%	93	9.97%	-		931
Maryland	1,925	81.94%	66	2.82%	211	8.97%	116	4.92%	32	1.35%	2,350
Kansas	4,138	85.26%	65	1.35%							

HM-40 Footnotes Page:

- (1) Prior to 1999, municipal was included with other jurisdictions.
- (2) Includes State park, State toll, other State agency, other local agency, and other roadways not identified by ownership.
- (3) Roadways in Federal parks, forests, and reservations that are not part of the State and local highway systems.
- (4) 2009 data.

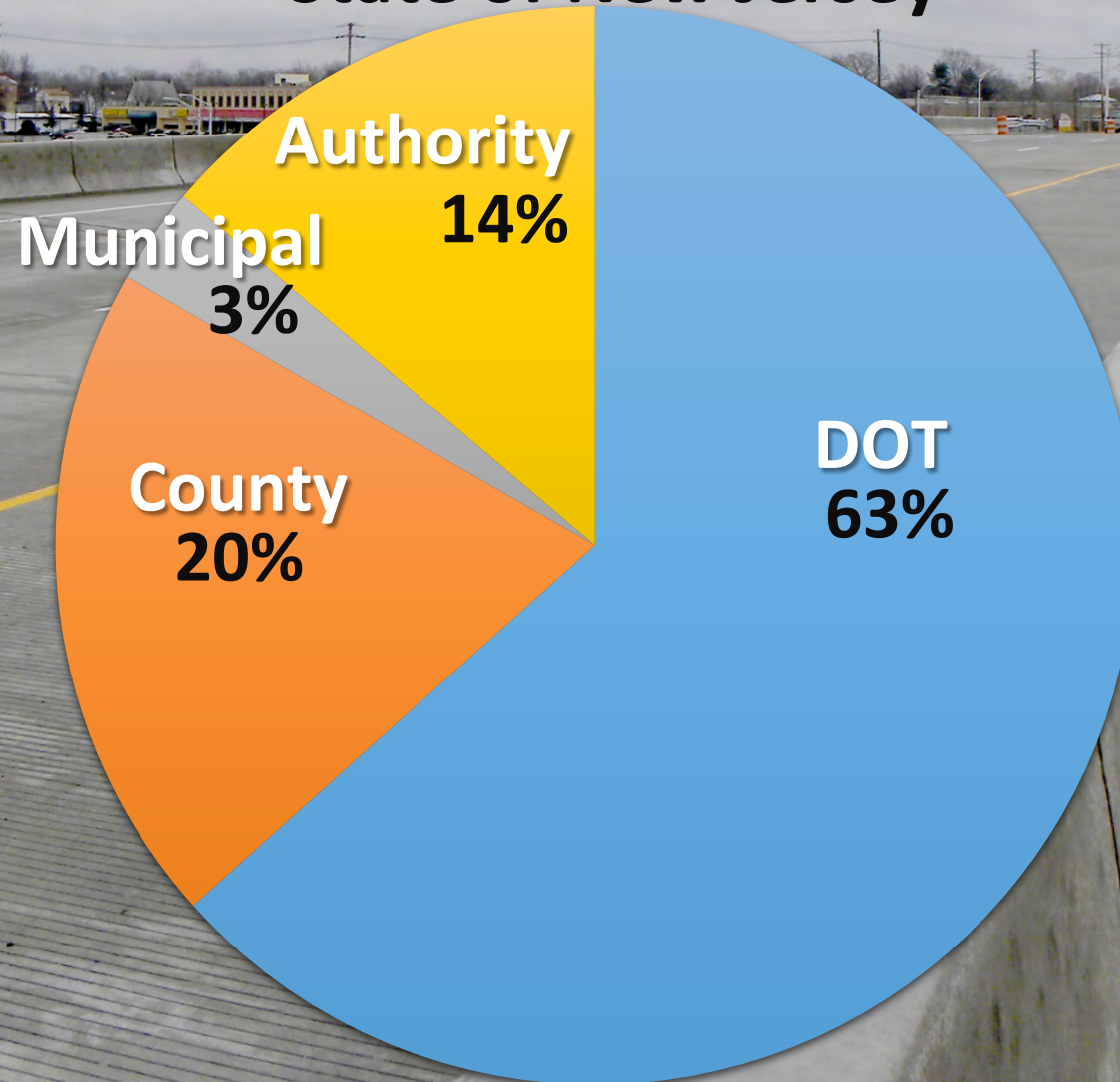




# NATIONAL HIGHWAY SYSTEM ROAD LENGTH - 2013

Percentage of Miles By Ownership

State of New Jersey

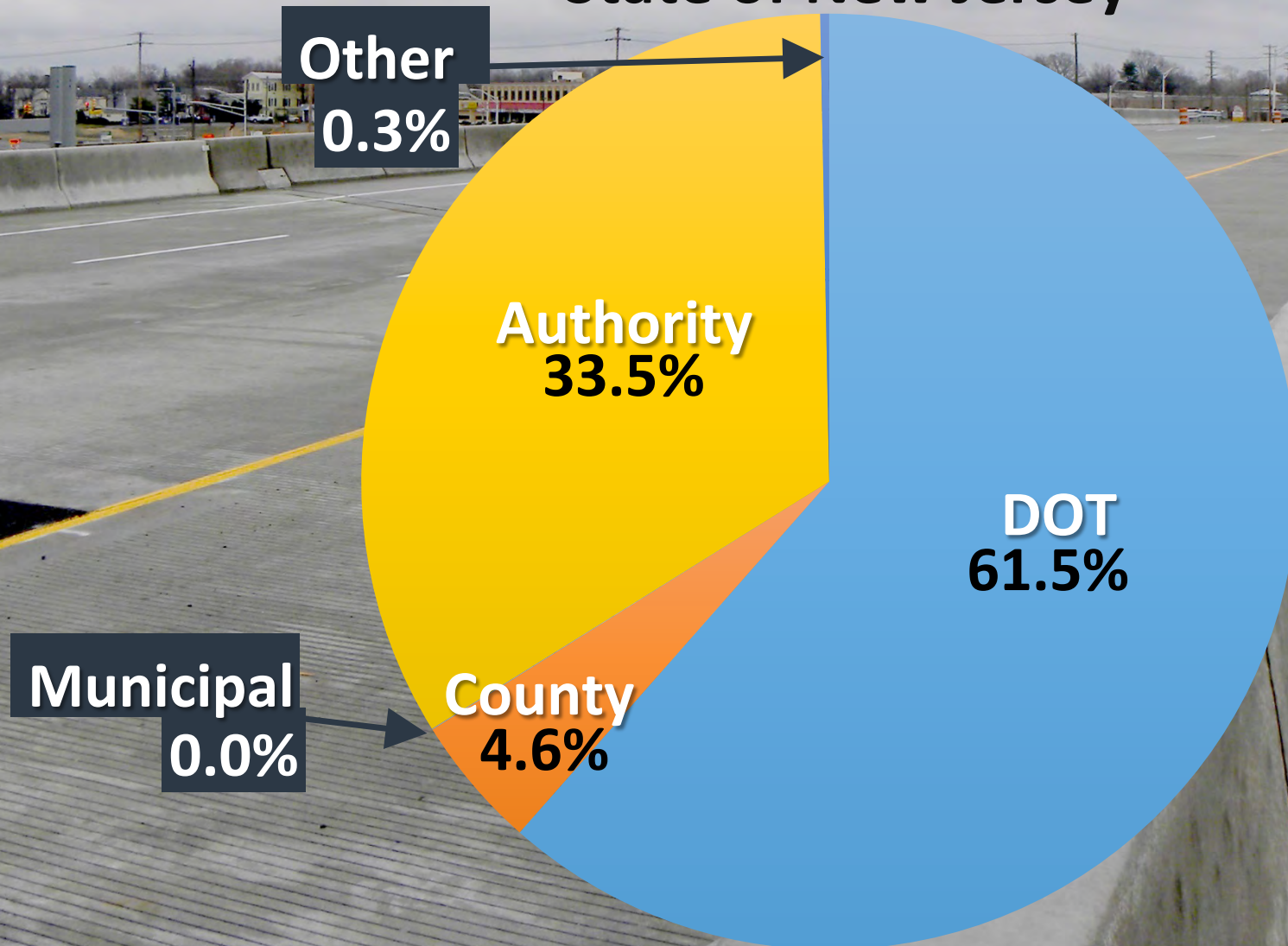




# NATIONAL HIGHWAY SYSTEM BRIDGES- 2016

Percentage of Bridges By Ownership

State of New Jersey





# PERFORMANCE REPORTING



## Pavement

- Have Inventory and Condition Data for State owned miles
- Collecting Inventory and Condition Data for non-State owned miles

## Final Rule

- Uncertainty on distress component
- Adequacy of condition data to perform analysis



# PERFORMANCE REPORTING

## Bridges

- Have Inventory and Condition Data for all Bridges over 20 feet

## TAMP

- Interest to add additional assets
- Availability of data for non-State additional assets



# TARGET SETTING

For Pavements and Bridges

How to set a statewide target with high percent of NHS assets under non-State owners?



# TAMP WORK PLAN

- Listened to webinars
- Reviewed TAMP Pilot program/products
- Prepared draft work plan
- Solicited consultant assistance



# TAMP ASSETS | (Minimum)

- Pavements on Interstate System
- Pavements on the NHS
- Bridges on the NHS





# TAMP ASSETS | (Additional)

- Highway Carrying Minor Bridges (20 feet or less)
- Highway Carrying Tunnels
- Dams
- Overhead Sign Structures
- High Mast Light Poles



# PROJECT MANAGEMENT TEAM | NJDOT

- Statewide Planning
- Pavement Management
- Structure Evaluation & Bridge Management
- Capital Program Development
- Transportation Data Development





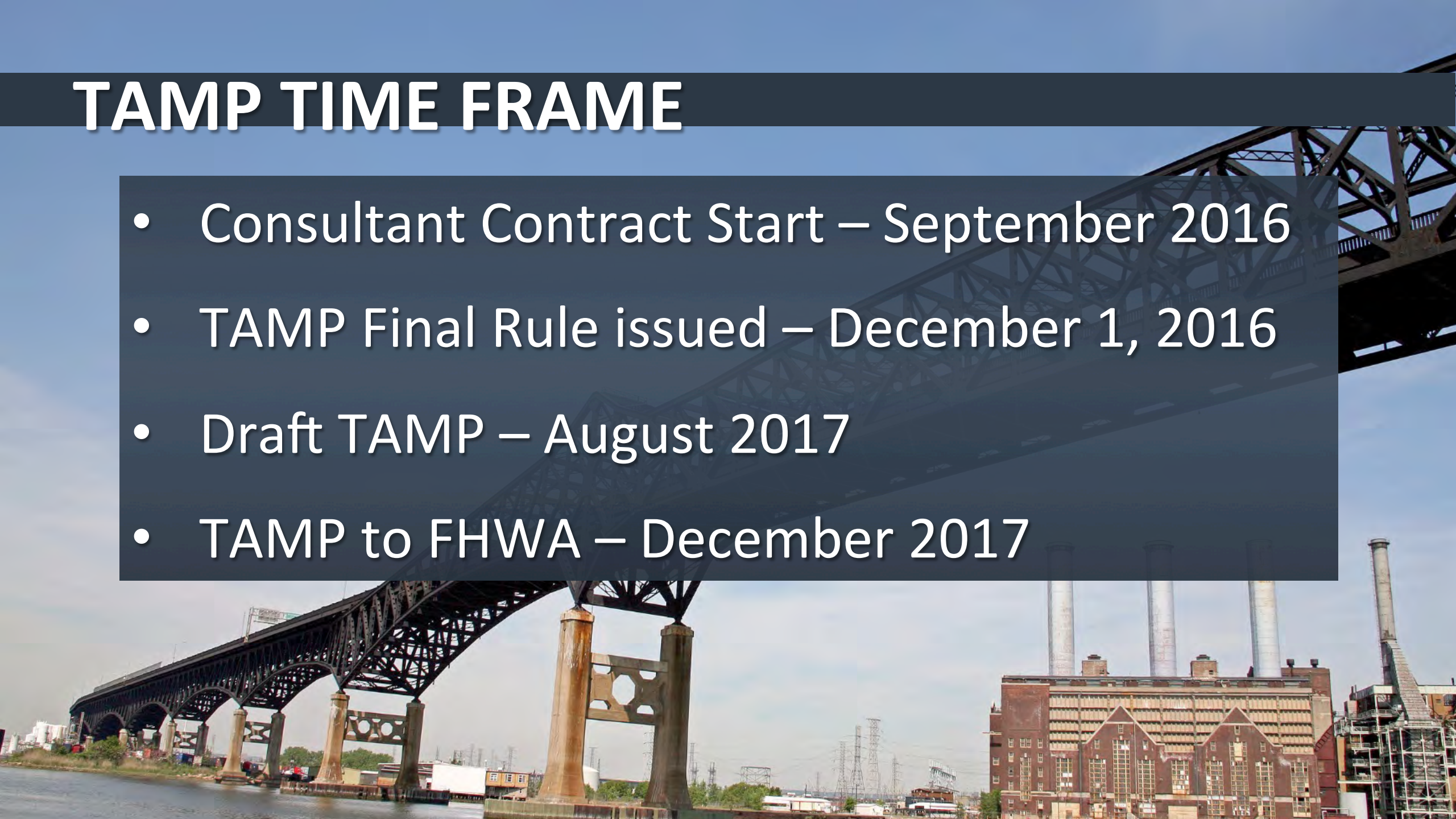
# PROJECT MANAGEMENT TEAM

- New Jersey Turnpike Authority
- South Jersey Transportation Authority
- Bridge Authorities/Commissions
- Metropolitan Planning Organizations
  - Delaware Valley Regional Planning Commission
  - North Jersey Transportation Planning Authority
  - South Jersey Transportation Planning Organization
- Various Counties and Municipalities
- Federal Highway Administration



# TAMP TIME FRAME

- Consultant Contract Start – September 2016
- TAMP Final Rule issued – December 1, 2016
- Draft TAMP – August 2017
- TAMP to FHWA – December 2017





# TAMP ISSUES

- Performance measures final rule
- One year deadline for TAMP
- NHS mileage under non-State owners
- Coordination with non-State owners



A wide, empty highway with concrete barriers on both sides. The road surface is light gray with yellow and white lane markings. In the background, there are utility poles, some buildings, and a cloudy sky. The overall scene is a construction or recently completed road project.

**Thank You.**

**Jim Lewis**

Manager, NJDOT Statewide Strategies

*[Jim.Lewis@dot.nj.gov](mailto:Jim.Lewis@dot.nj.gov)*