

ARKANSAS' TAMP PROGRESS

Asset Management Peer Exchange
July 9, 2016

Michael Henry, P.E.
Transportation Planning and Policy Division
Arkansas State Highway and Transportation Department



The Framework

Strategic Plan

Performance Management

Long Range
Transportation
Plan

Organizational
Management

Modal
Plans

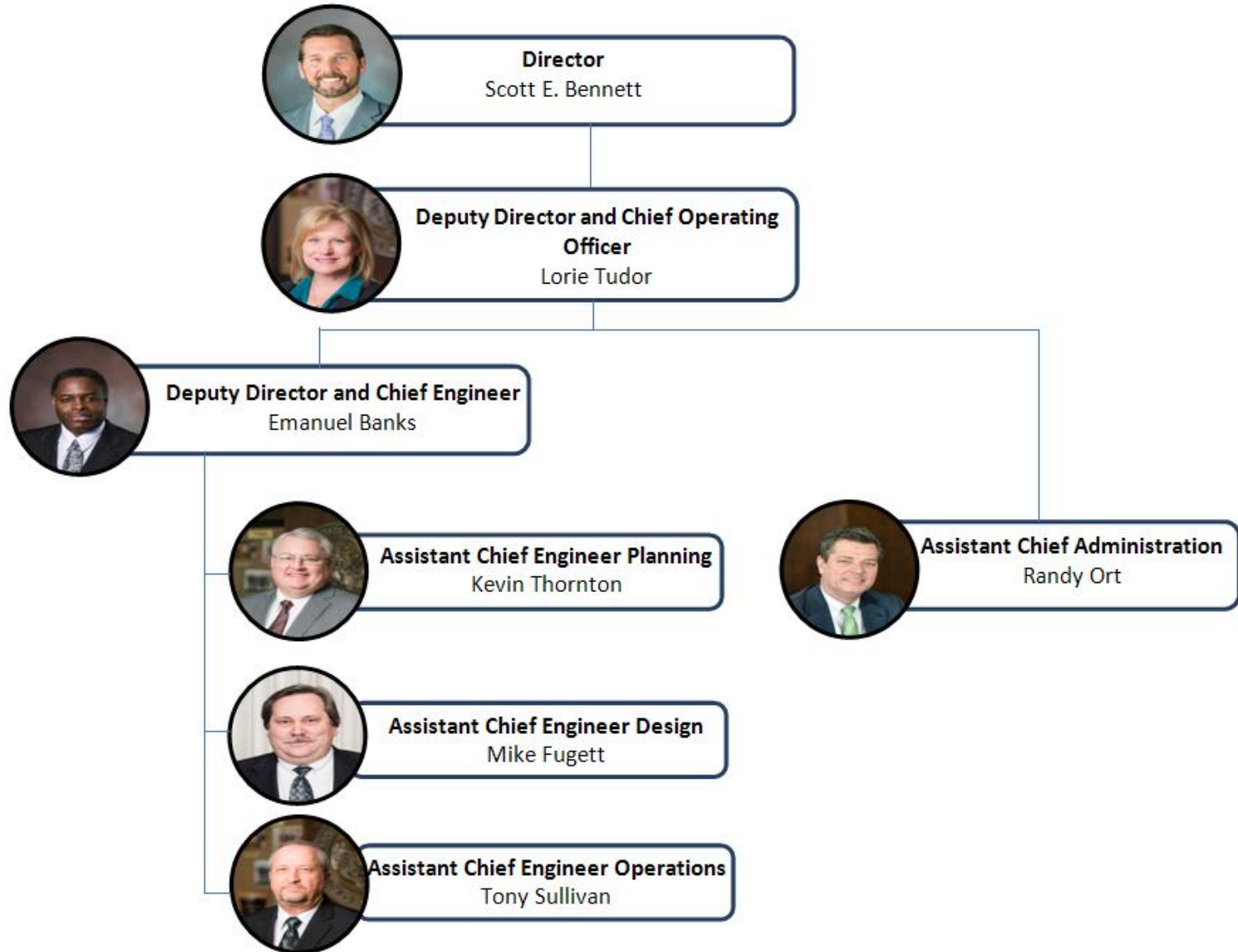
TAMP

SHSP

Human
Resources

IT
Support

Top Level Administration

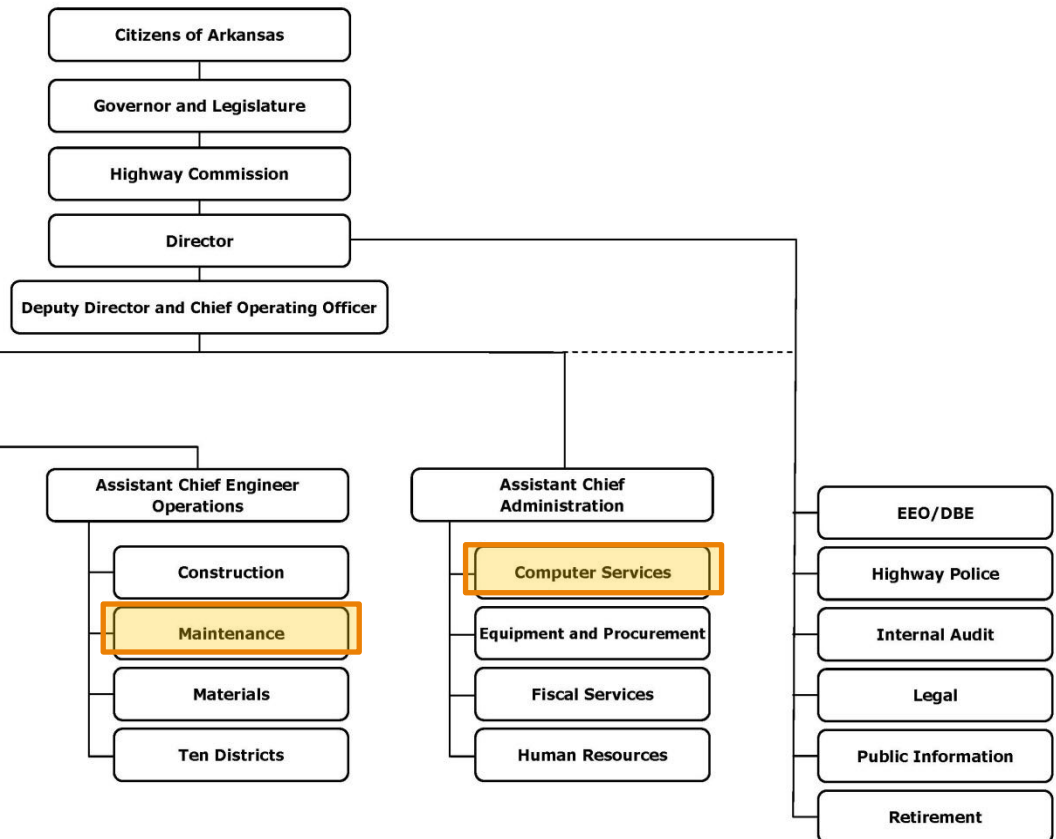


TAMP Steering Committee

ARKANSAS STATE HIGHWAY AND TRANSPORTATION DEPARTMENT ORGANIZATION CHART

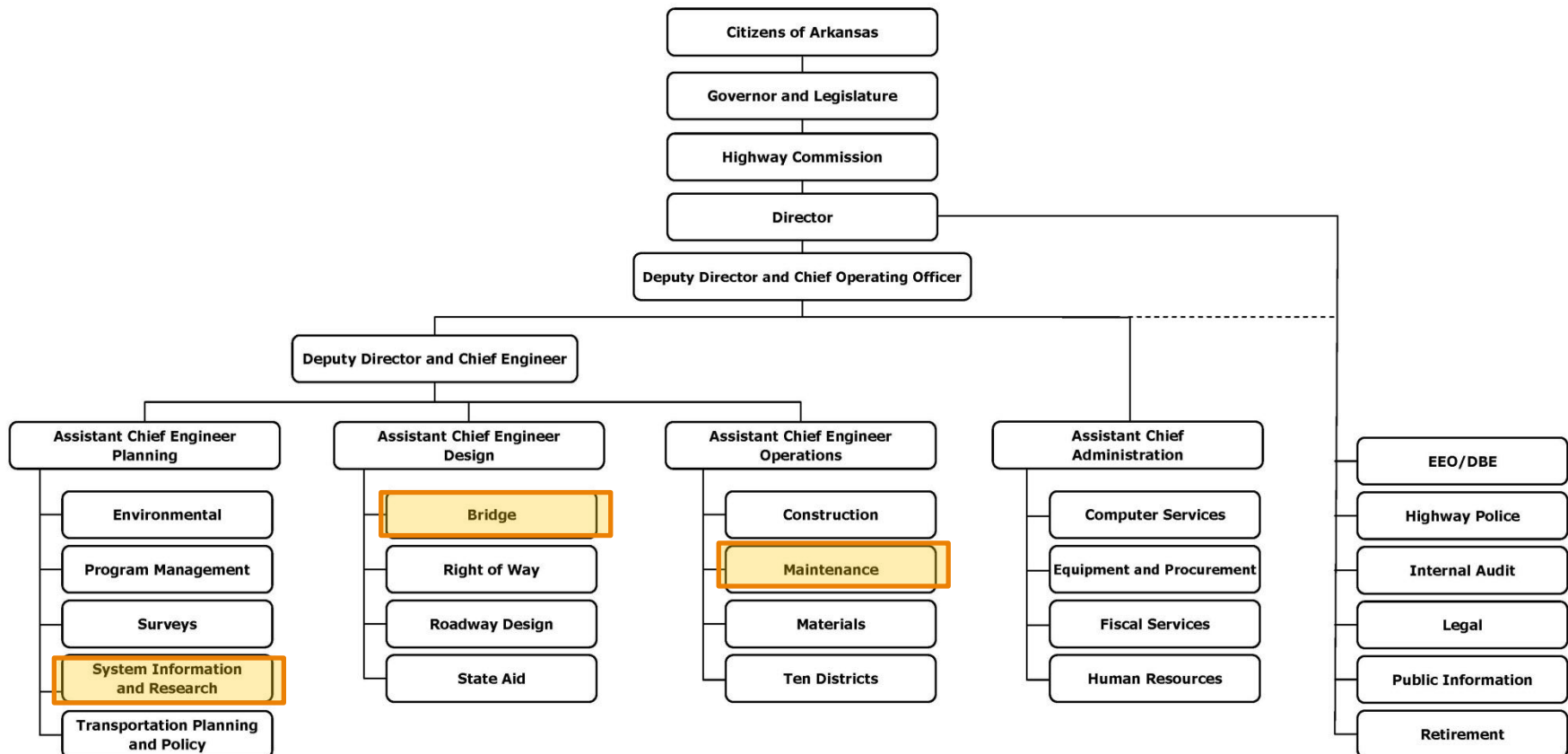


FHWA

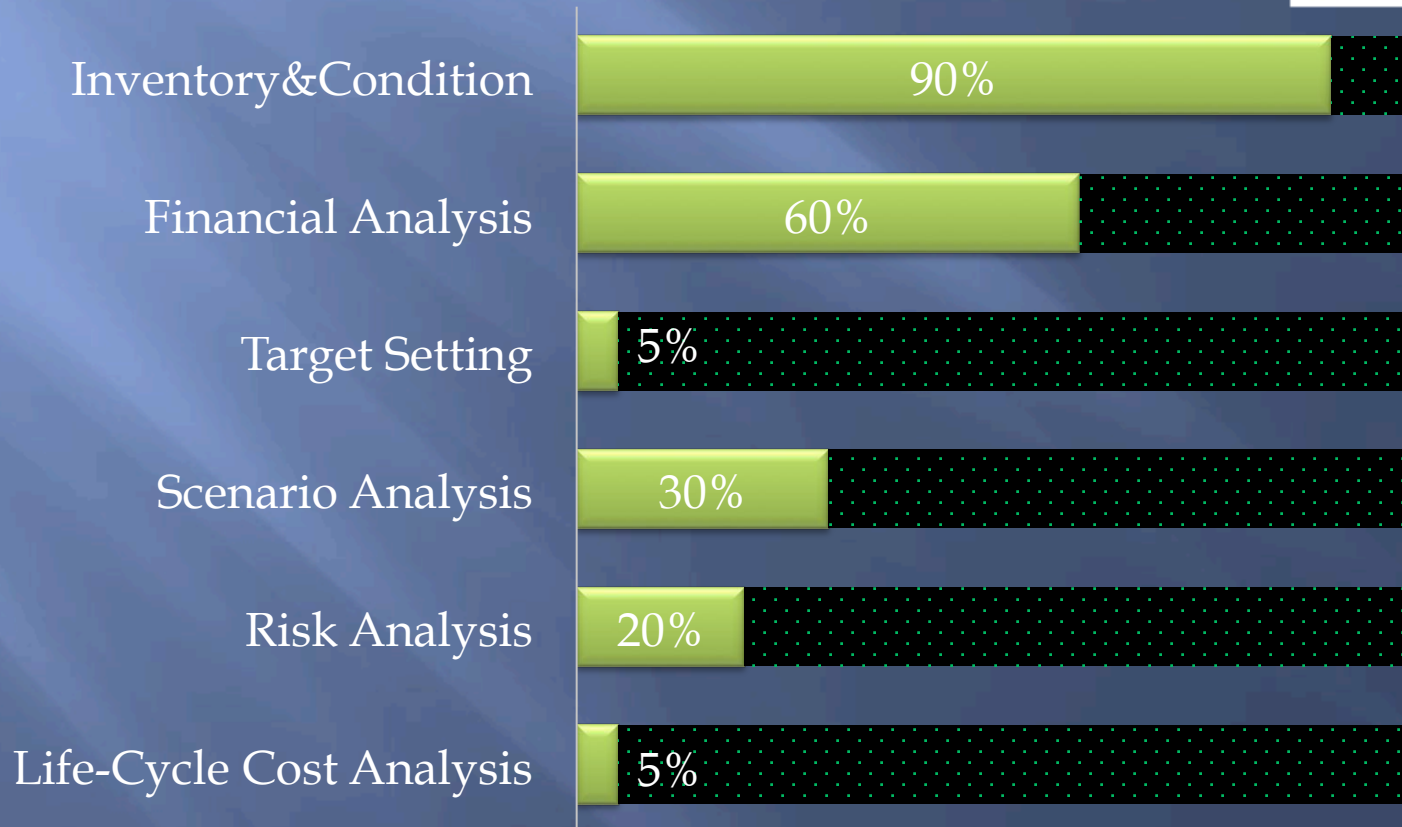


TAM Data Collection/Management System

ARKANSAS STATE HIGHWAY AND TRANSPORTATION DEPARTMENT ORGANIZATION CHART



So what is the status?



Inventory and Condition

Table XX. Pavement Condition (2014 snapshot)

Category	Centerline Miles	Lane miles	%good*	%poor*	Replacement Value (million \$)**
Interstate	703	2,980	77	4	1,125
NHS(non-Interstate)	2,673	7,824	54	7	4,277
APHN(non NHS)	4,524	9,736	34	14	7,238
SHS(non APHN)	8,530	17,069	15	34	13,648

*Condition is by centerline miles

** Cost per Ln-Mile 1.6 million\$ is used to estimate the replacement value

Table XX. Bridge Inventory and Condition (2014 snapshot)

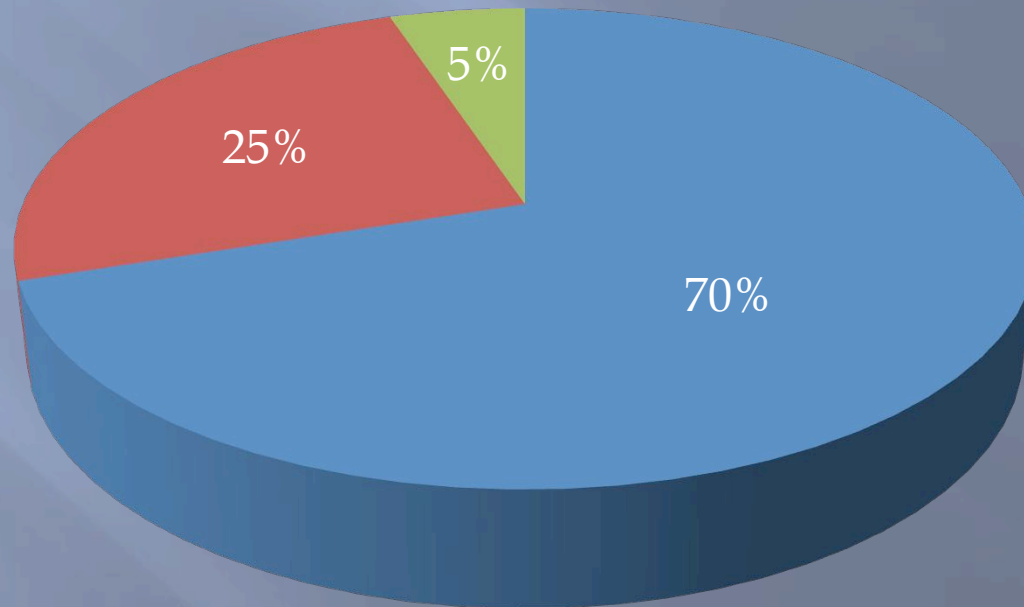
Category	Count	Deck Area (Million sqft)	%good (by area)	%poor (by area)	Average age (by deck area)	Average age (by bridge count)	Replacement Value* (Million\$)
All NHS	2,313	33.8	49.4	7.1	34	41	4,500
All APHN	4,200	44.5	49.7	7.2	36	46	6,000
All SHS	7,028	55.6	50.5	6.8	36	45	7,600

*Federal Aid \$132/sqft, off-system \$168/sqft is used to estimate the replacement value

Financial Analysis

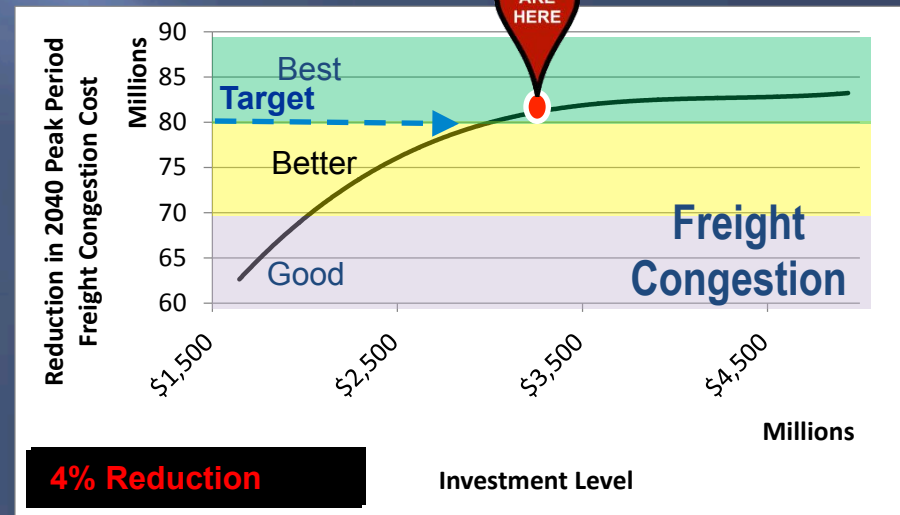
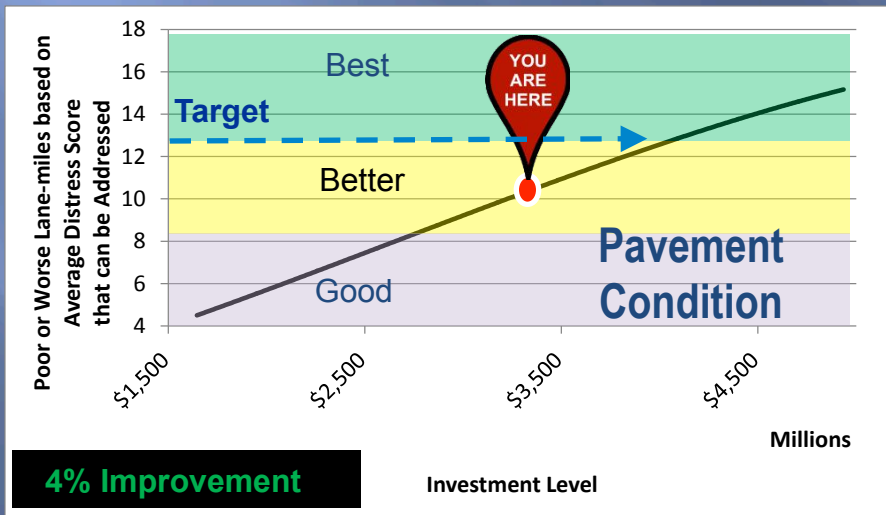
AHTD 2004-2015 Highway Construction

■ NHS ■ Non_NHS_APHN ■ Off_APHN



Target Setting

Scenario Analysis



Current investment level and target level



What if want all at Best Performance?

Risk Analysis

Life-Cycle Cost Analysis

Questions?

Arguing with an Engineer is a lot like wrestling in the mud with a pig. After a couple of hours you realize that the pig likes it.

-Anonymous