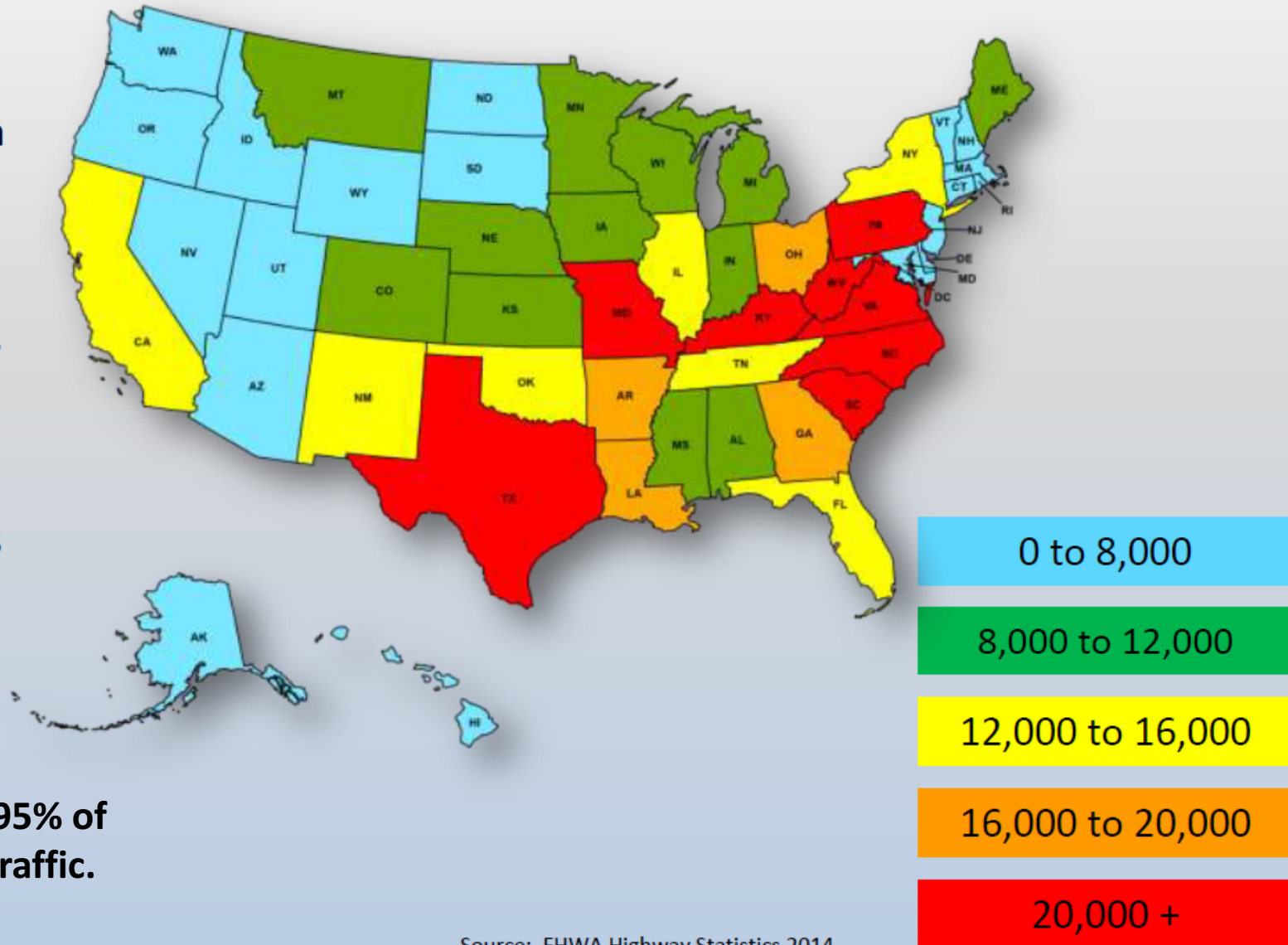


An aerial photograph of a road intersection, likely a roundabout or a complex interchange, surrounded by lush green trees and grass. The road is paved and has yellow dashed lines in the center. The image is overlaid with a semi-transparent map of Arkansas, showing various counties and cities. The text "Targets: Trials & Tribulation" is written in a large, bold, white font with a red outline across the center of the image.

Targets: Trials & Tribulation

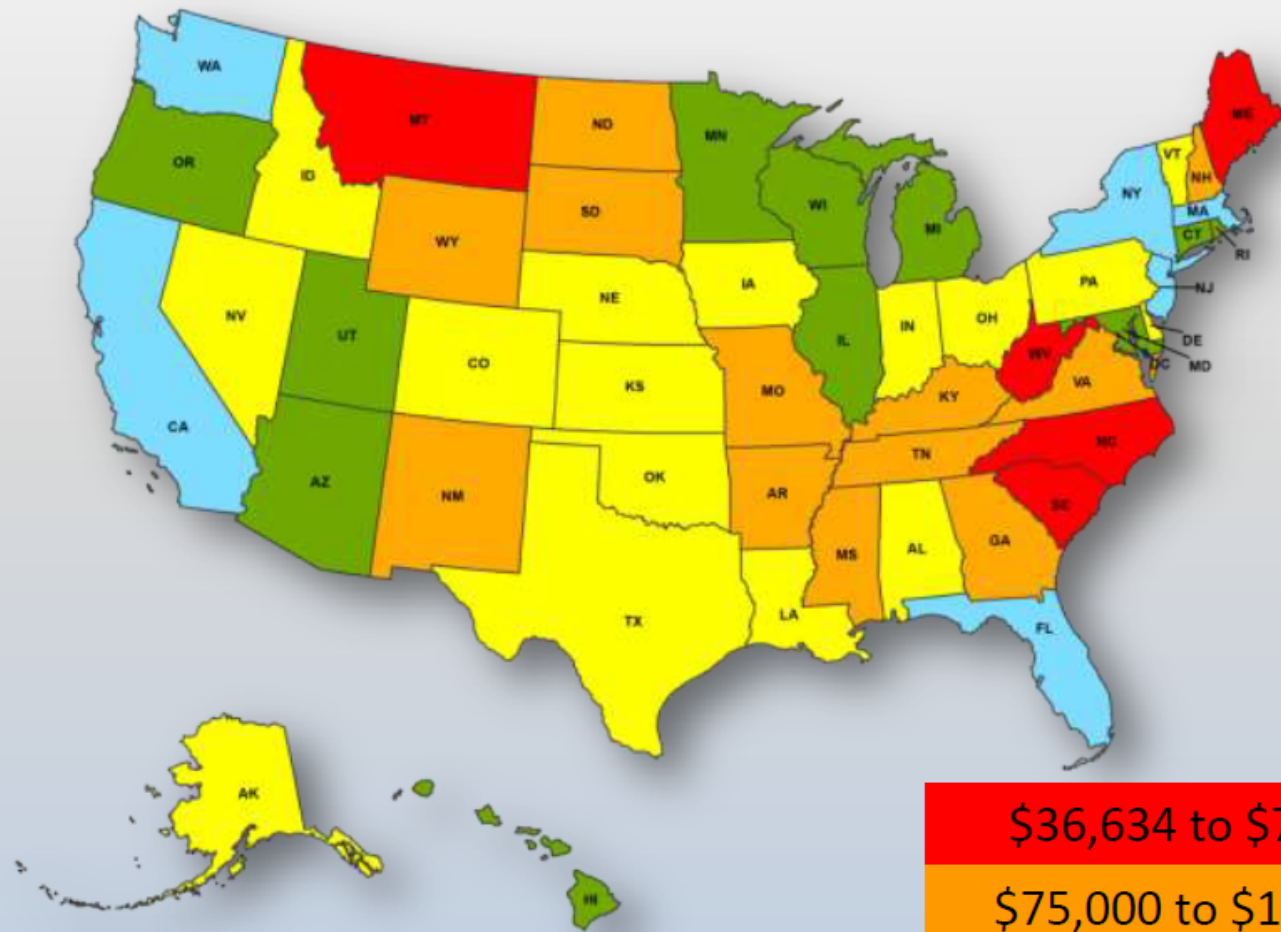
16,418 miles

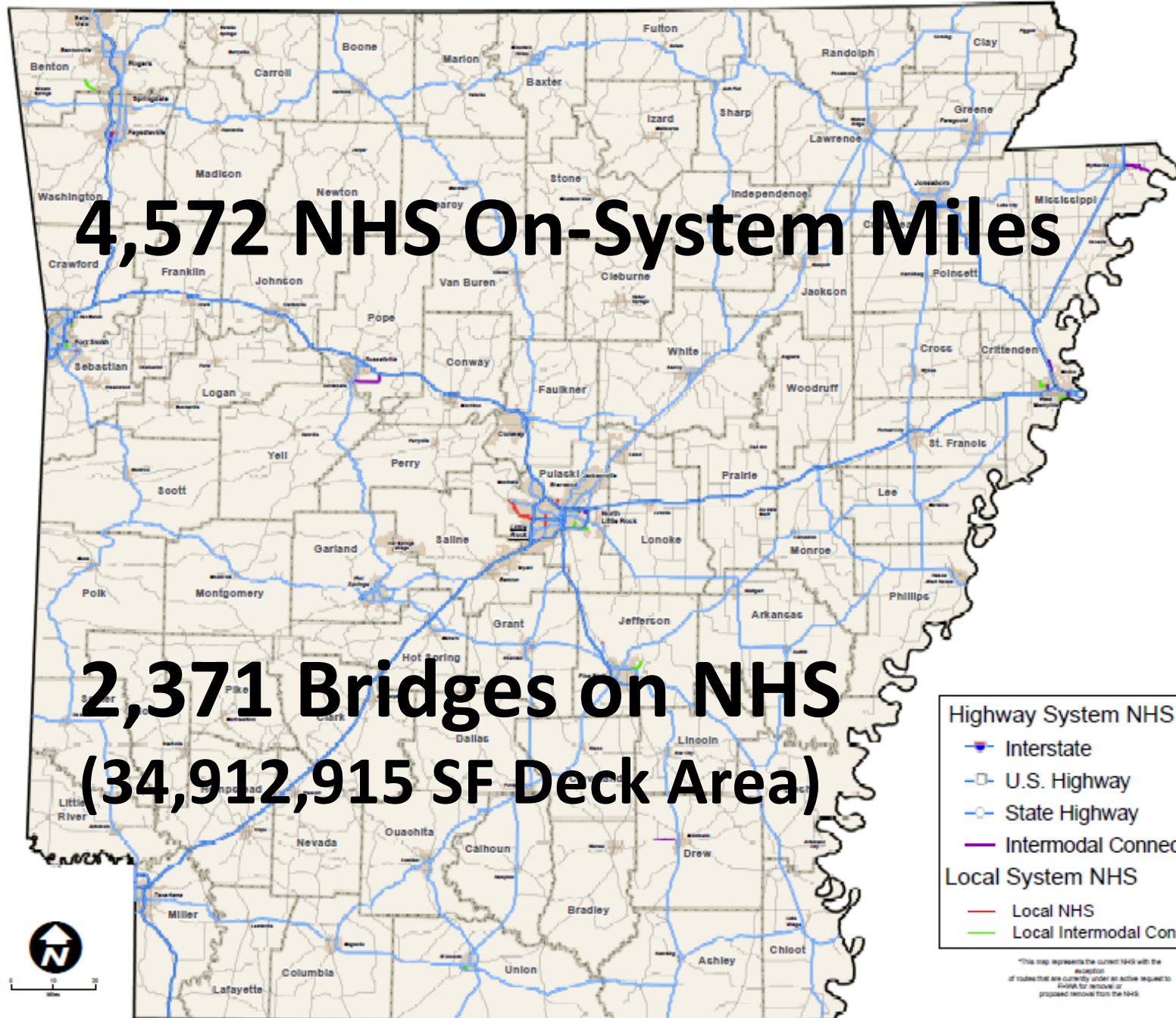
- **12th largest highway system in the country.**
- **Includes Interstates, U.S. highways and State highways.**
- **These highways carry 74% of all vehicle miles traveled in Arkansas.**
- **They also carry 95% of all heavy truck traffic.**

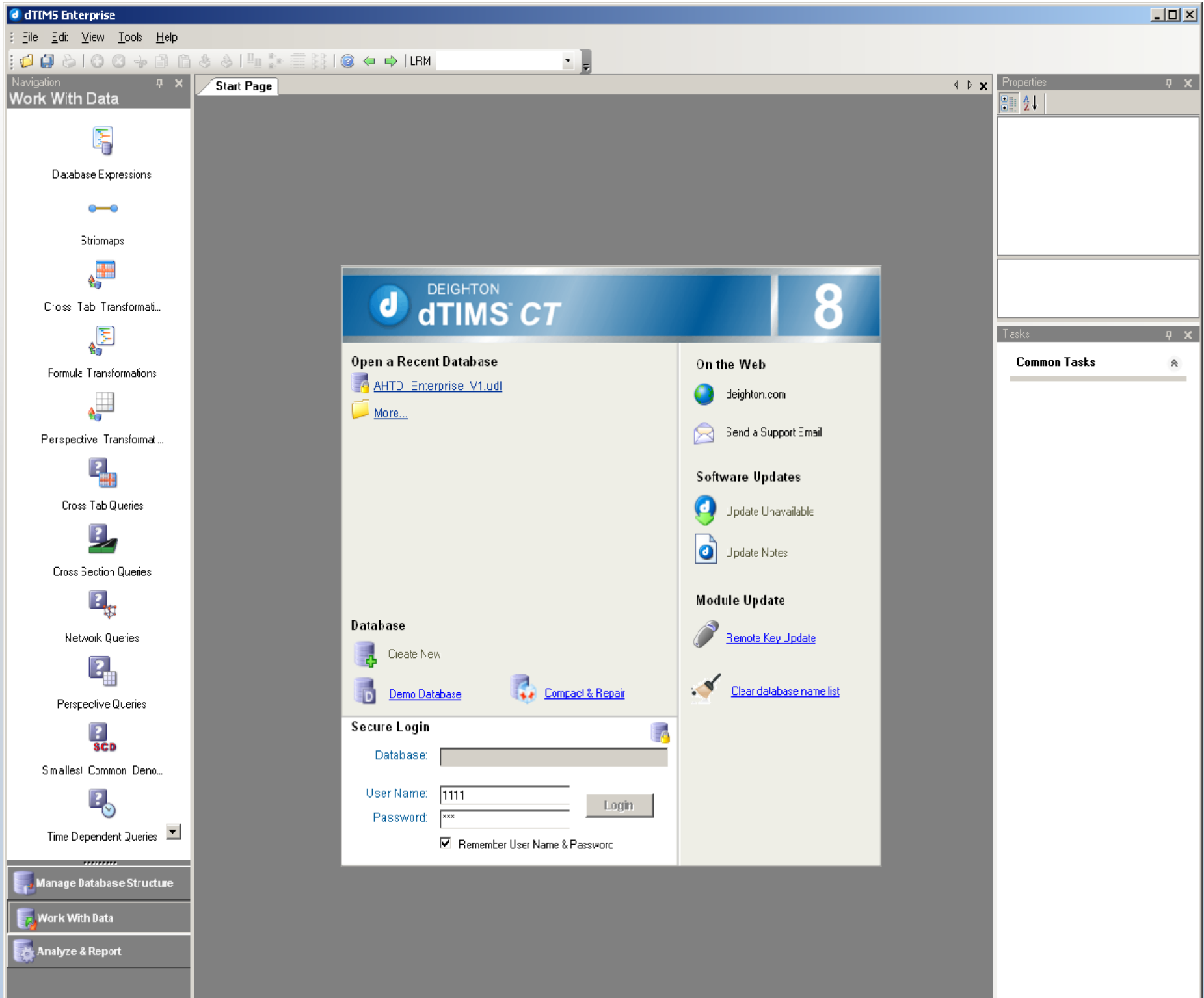


\$86,498

- Although we have the 12th largest highway system in the country, we only rank 42nd in terms of revenue per mile to support that system.
- This is not a good combination!







ARAN (Automatic Road Analyzer)

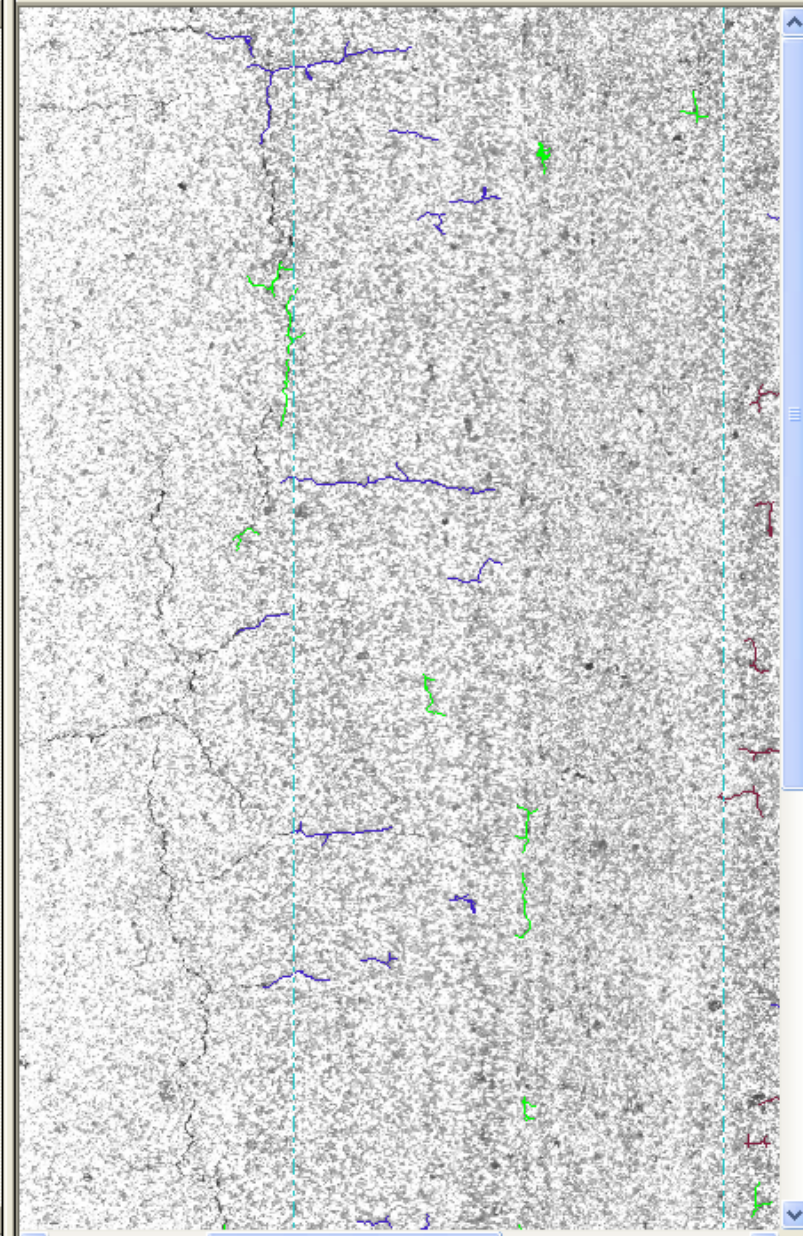
GYROSCOPES
Inertial Navigation



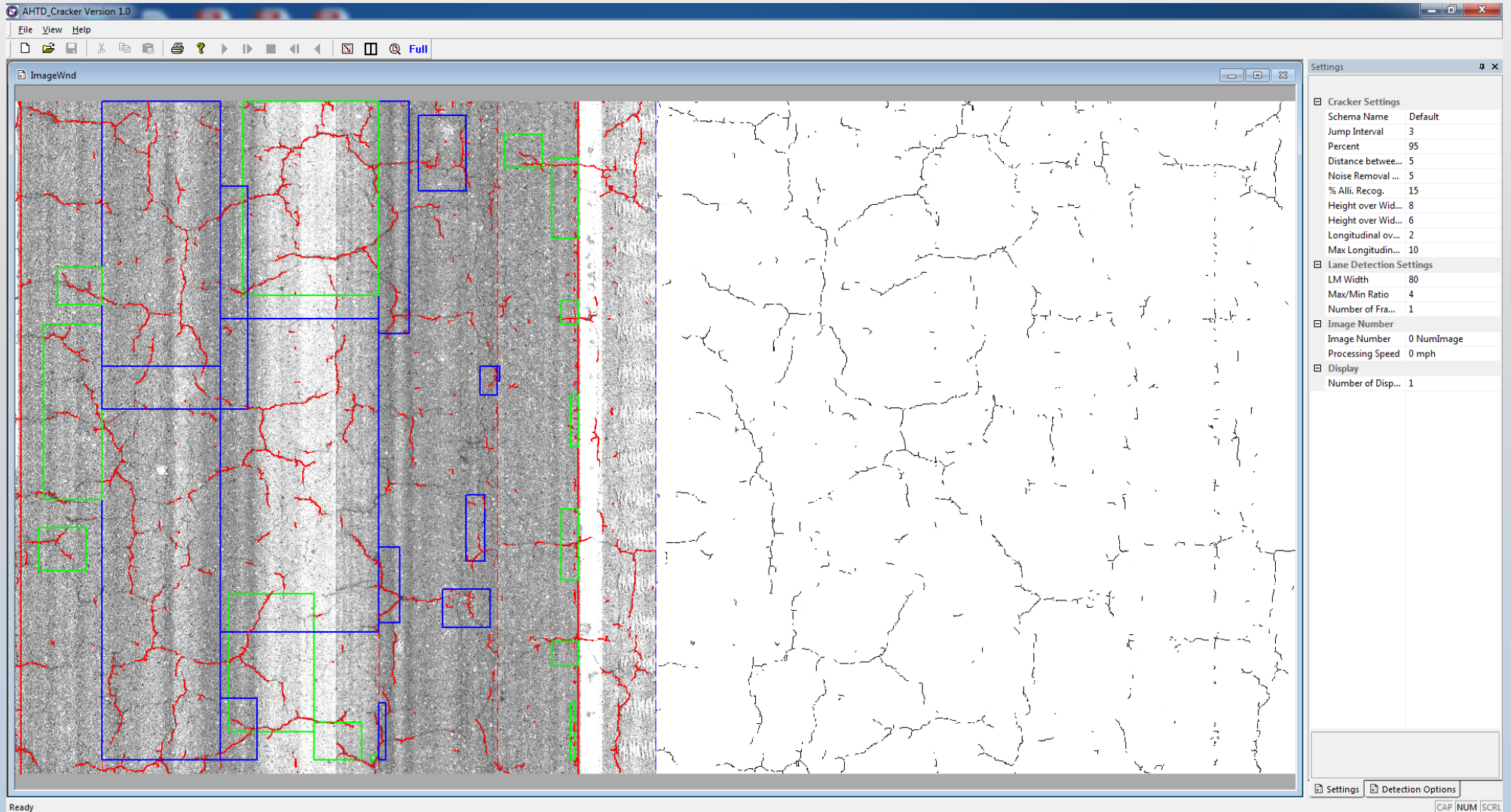


	A	B	C	D	E	F	G
1	File:	98000200					
2	Section:	070					
3	Station:	390->395					
4	Frame #:	395					
5	Pave. Code:	0					
6							
7	Chainage	Offset	Length (m)	Width (mm)	Type	Density	
8	390.061	1.527	0.155	3.3	1	10	
9	390.084	0.41	0.175	3.9	2	11	
10	390.233	1.949	0.163	3.9	2	23	
11	390.264	1.898	0.193	6.5	2	30	
12	390.274	1.764	0.469	4.5	2	30	
13	390.3	2.425	0.558	3.8	2	31	
14	390.305	1.428	0.268	4.1	2	16	
15	390.321	2.582	0.161	3.7	1	10	
16	390.336	2.966	0.579	3.8	4	38	
17	390.344	2.861	0.162	3.4	4	42	
18	390.386	2.078	0.185	4	1	23	
19	390.407	1.401	0.193	4.2	1	20	
20	390.473	1.462	0.169	3.7	1	18	
21	390.515	2.027	0.17	4.2	1	21	
22	390.528	2.752	0.174	4	4	22	
23	390.535	2.786	0.314	4	4	45	
24	390.547	3.335	0.159	3.3	4	32	
25	390.552	3.192	0.303	2.8	4	48	
26	390.632	3.39	0.142	2.8	4	18	
27	390.64	3.005	0.445	3.7	4	51	
28	390.773	1.565	0.256	3.9	1	17	
29	390.849	1.799	0.137	3.9	2	10	
30	390.896	2.573	0.23	4.6	2	15	
31	390.923	0.264	0.148	4.6	1	10	
32	390.959	1.428	0.185	3.7	2	12	
33	390.978	2.809	0.388	3.3	4	24	
34	391.051	3.193	0.152	6.2	4	17	
35	391.169	2.508	0.186	3.3	4	19	
36	391.188	1.974	0.264	3.8	1	23	
37	391.273	3.394	0.265	2.8	2	17	
38	391.333	1.875	0.183	4.1	1	13	
39	391.34	2.488	0.169	3.7	4	22	
40	391.36	2.971	1.014	3.5	4	43	
41	391.402	3	0.623	3.7	4	45	

STN: 390 -> 395



Vu-doo Screen Shot





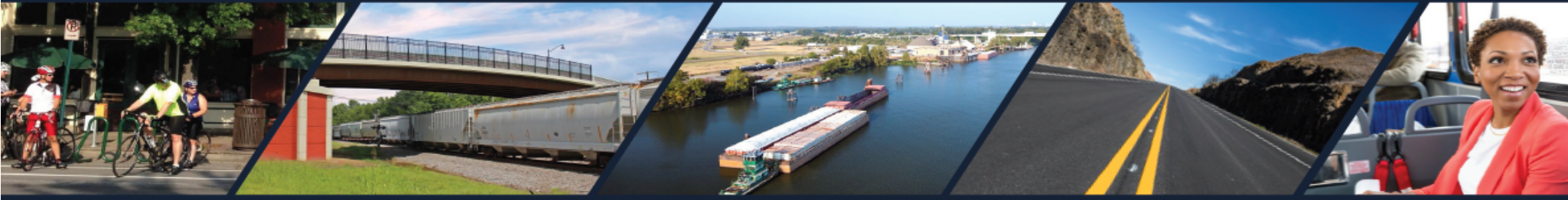
ARKANSAS DEPARTMENT OF TRANSPORTATION



ARKANSAS

Long Range Intermodal Transportation Plan

Executive Summary



Help From The Pros



Concerns

- Ability to generate depreciation curves using dTIMS
- Upgrade of pavement condition data collection equipment
- Increased funding
- Implementation of 10-year Pavement Preservation Program

- ARDOT.gov
- IDriveArkansas.com
- ConnectingArkansasProgram.com
- InterstateRehabilitationProgram.com
- Vimeo.com/myARDOT



@myARDOT

