

## TPM State Workshop

---

# ***FHWA TPM Framework and Capability Maturity Model (CMM)***

Santa Fe, NM

December 13 & 14, 2016



U.S. Department of Transportation  
Federal Highway Administration



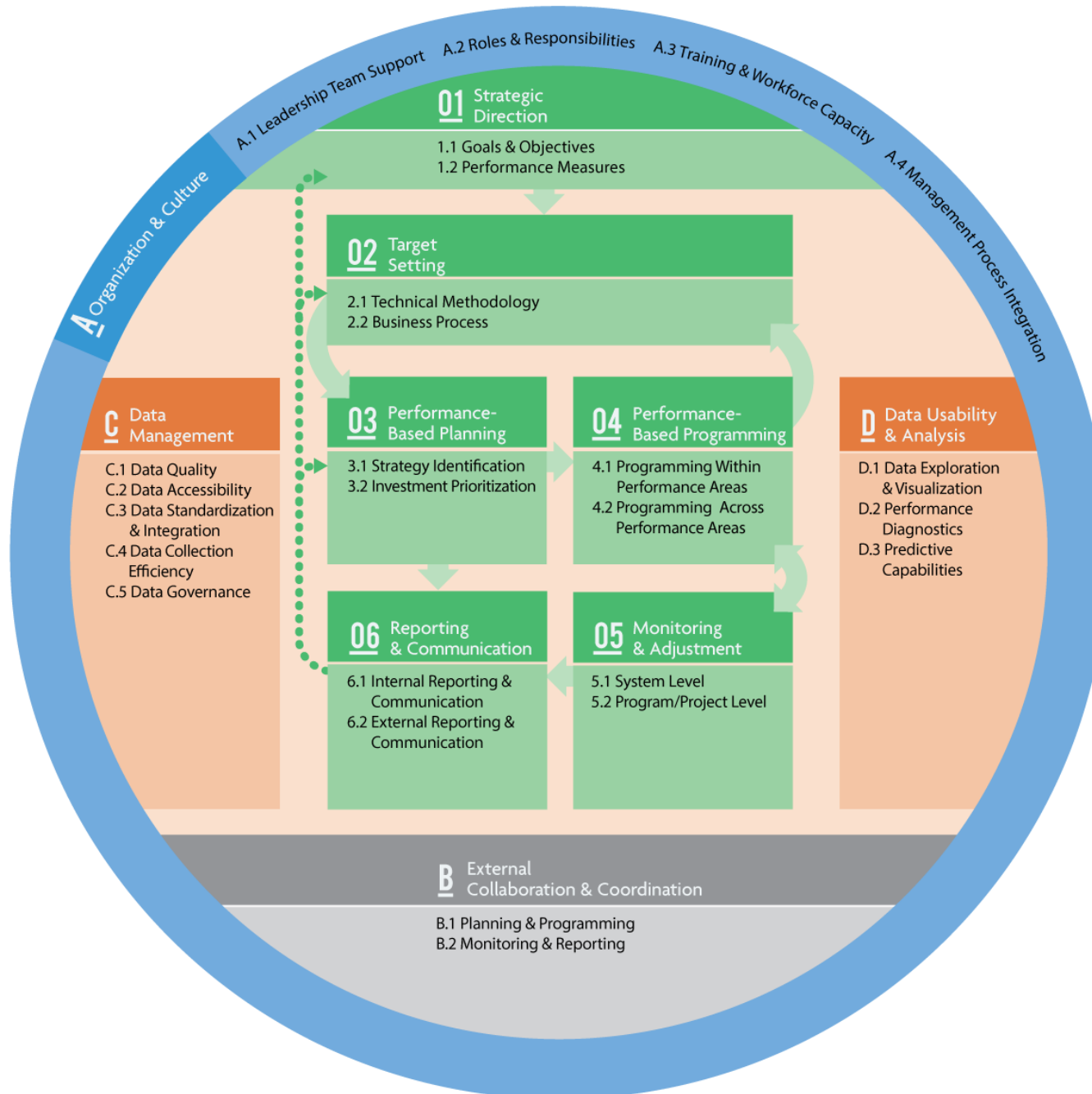
# ***TPM Professional Capacity Building Program***

- Goal: to ensure transportation agencies and local partners are prepared to carry out performance-based decision-making
- Elements:
  - FHWA-sponsored training
  - **FHWA-sponsored workshops (like this one!)**
  - TPM capacity development pooled fund
  - TPM implementation review survey
  - Let's Talk Performance webinar series





# TPM Framework



# TPM Framework

1. Strategic Direction

2. Target Setting

3. Performance-Based Planning

4. Performance-Based Programming

5. Monitoring & Assessment

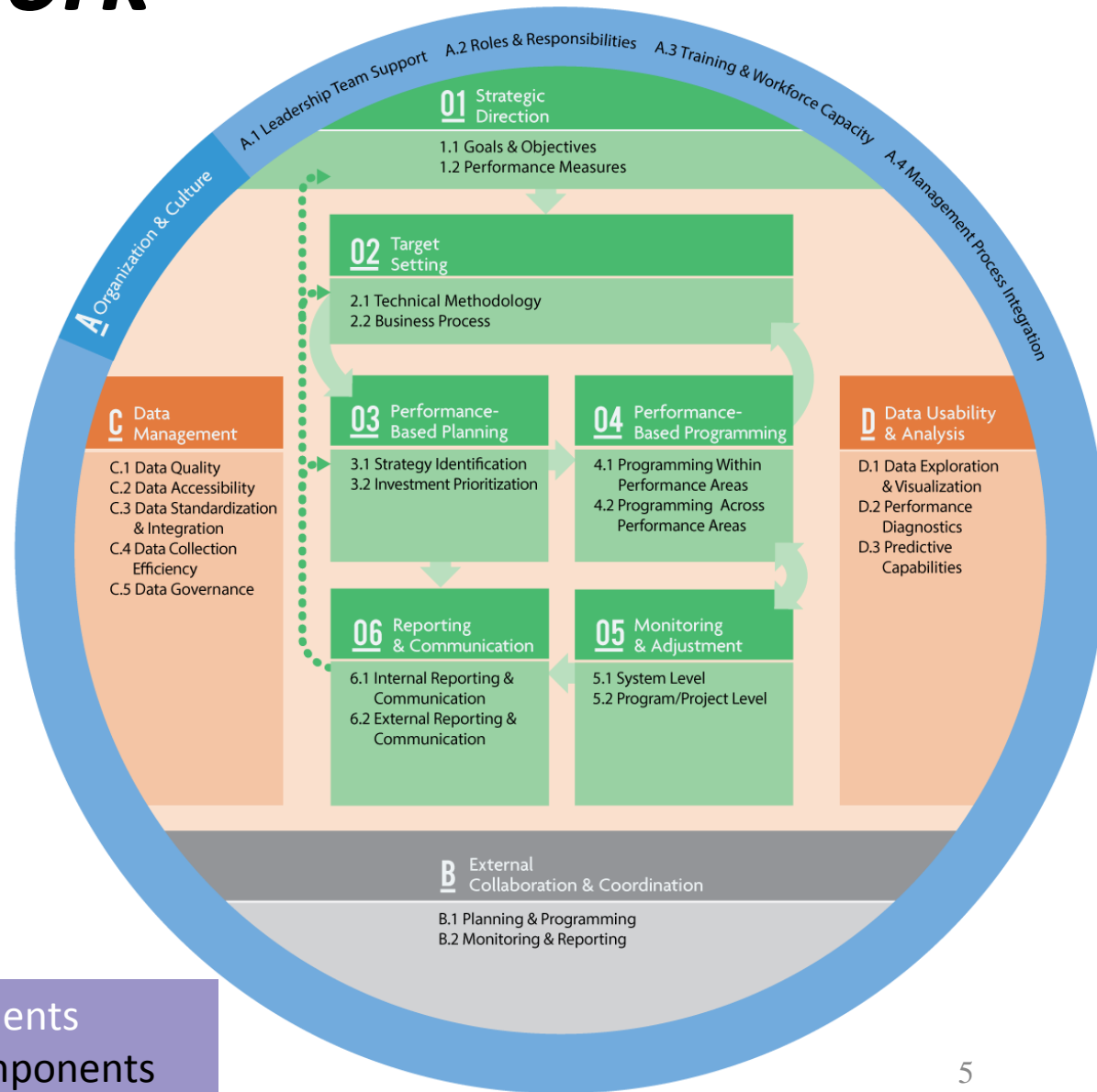
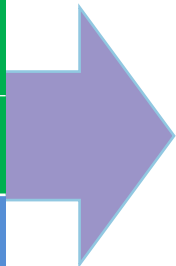
6. Reporting & Communication

A. Organization & Culture

B. External Collaboration & Coordination

C. Data Management

D. Data Usability & Analysis



CMM has 10 components with 26 Subcomponents

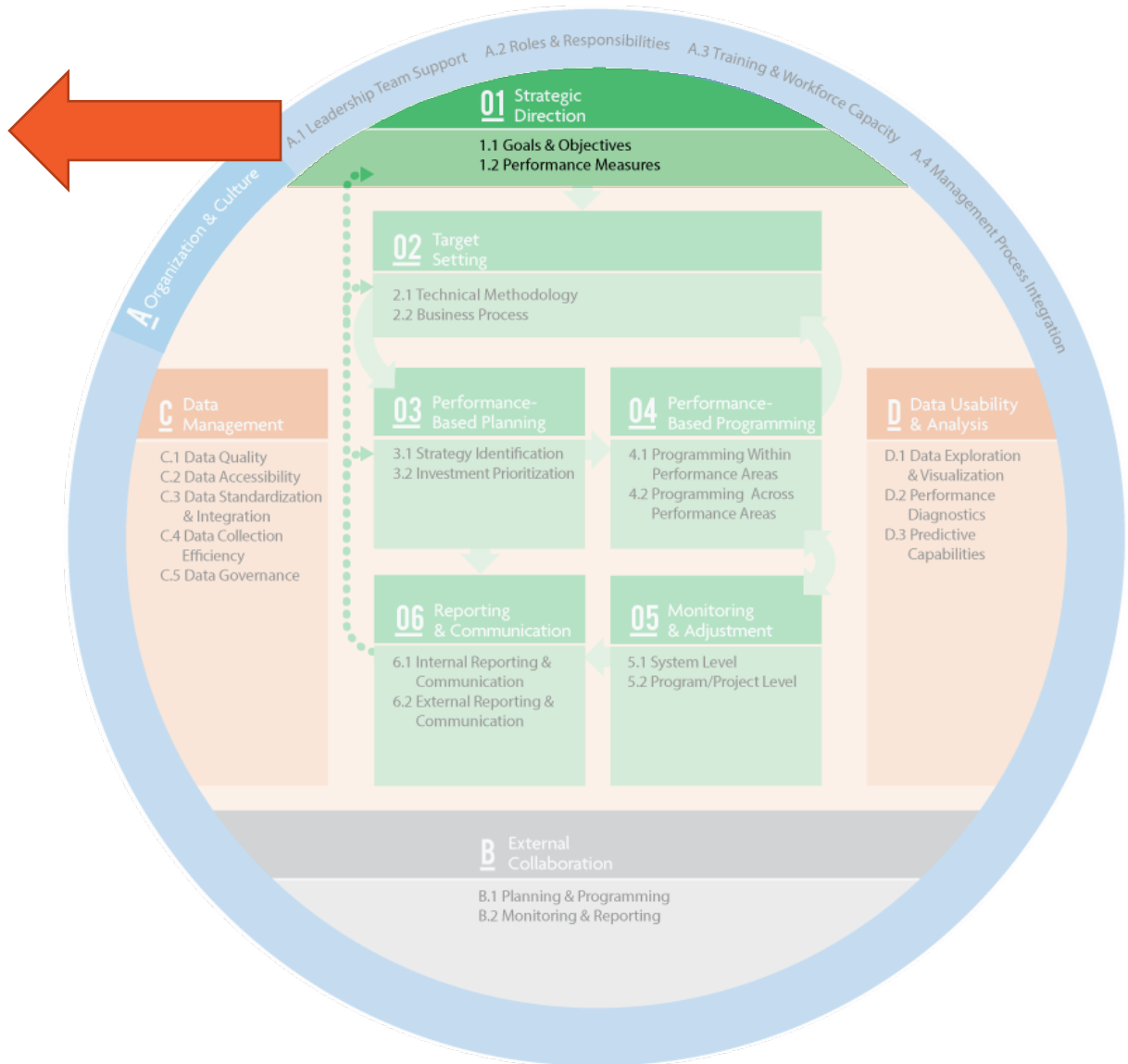
# Component 1: Strategic Direction



**01 Strategic Direction**

1.1 Goals and Objectives

1.2 Performance Measures



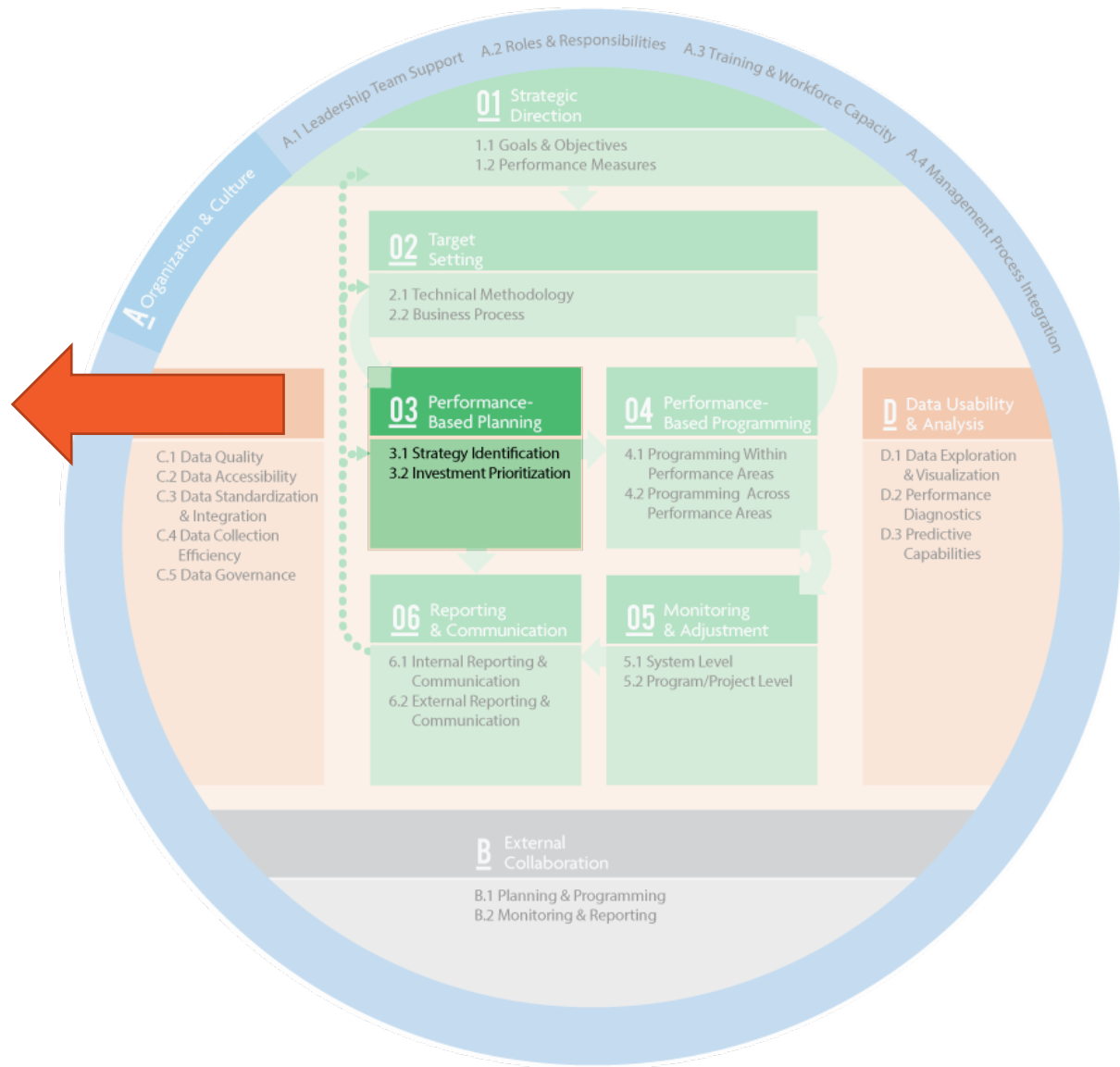
# Component 3: Performance-Based Planning



**03 Performance-Based Planning**

3.1 Strategy Identification

3.2 Investment Prioritization



# ***CMM: Capability Maturity Model***

## Purpose

- Assess current state of your agency
- Identify logical set of improvements
- Show benefit of moving to higher maturity levels

## TPM CMM

- Assesses maturity on 1-5 scale
- For each TPM Component

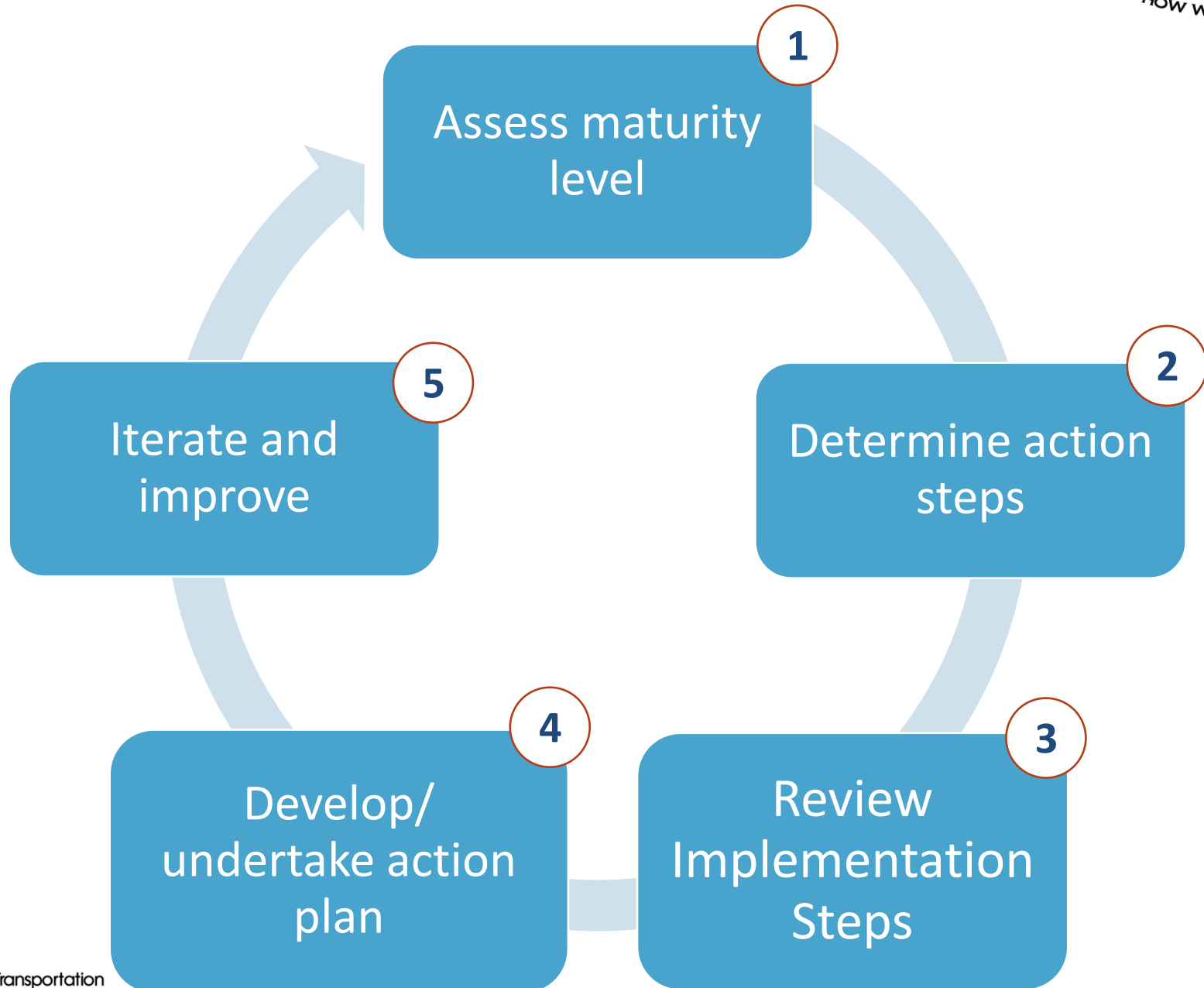




# TPM CMM Levels of Maturity

Level	Definition
1. Initial	Ad hoc, uncoordinated, firefighting, champion-dependent
2. Developing	Nominal framework (e.g., organizational roles) being defined and systematic approaches starting to emerge
3. Defined	Framework and systems defined but not fully implemented or effectively supporting decision making
4. Functioning	TPM practices have been institutionalized , information used to guide actions, data improvements being pursued, basic predictive and tradeoff capabilities in place
5. Sustained	TPM will survive across new leadership, managers using performance information, data effectively managed, and external stakeholders view performance results as useful in promoting accountability and transparency

# Implementation Process



# *Discussion: Assessment Results*

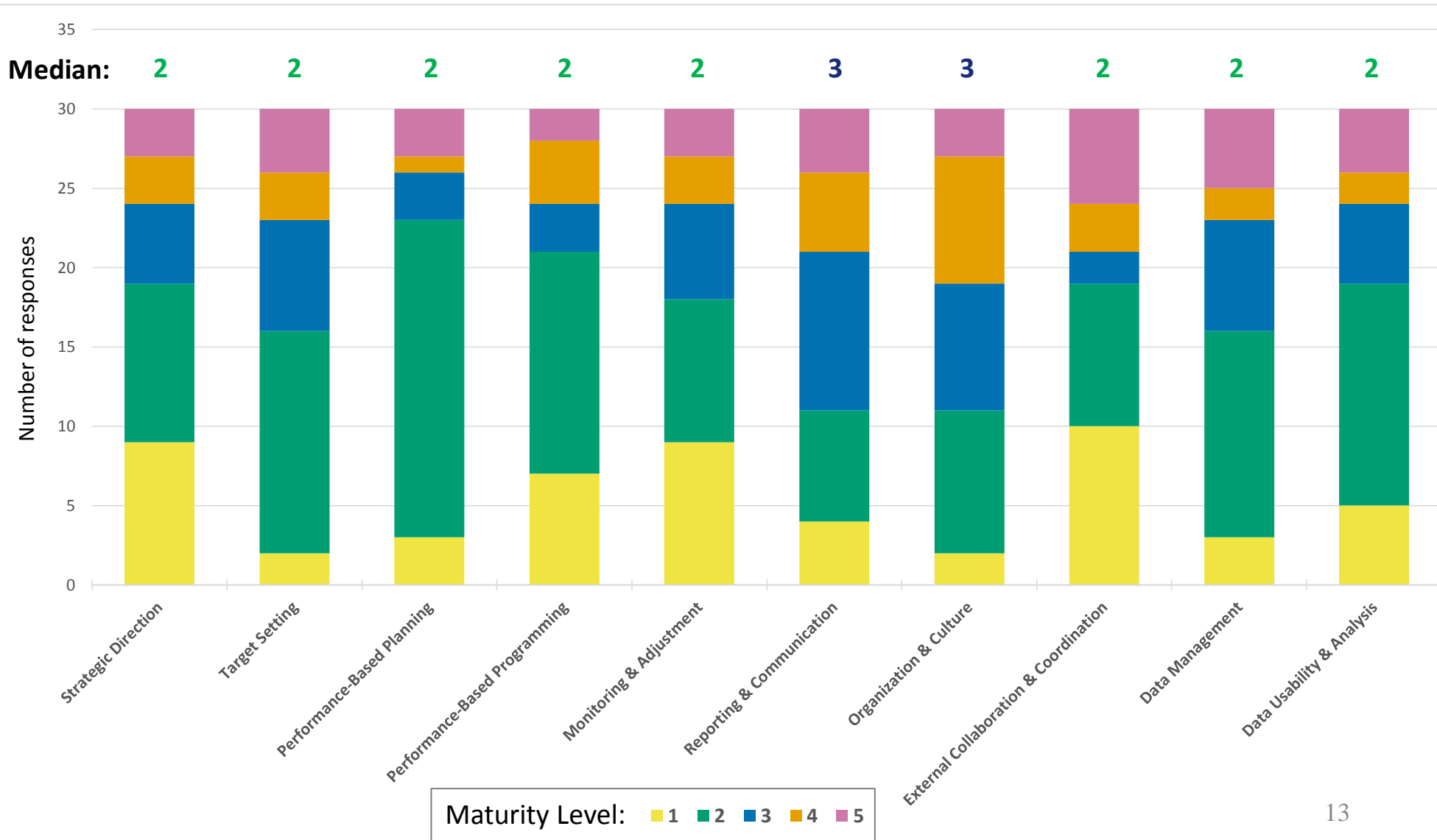


---

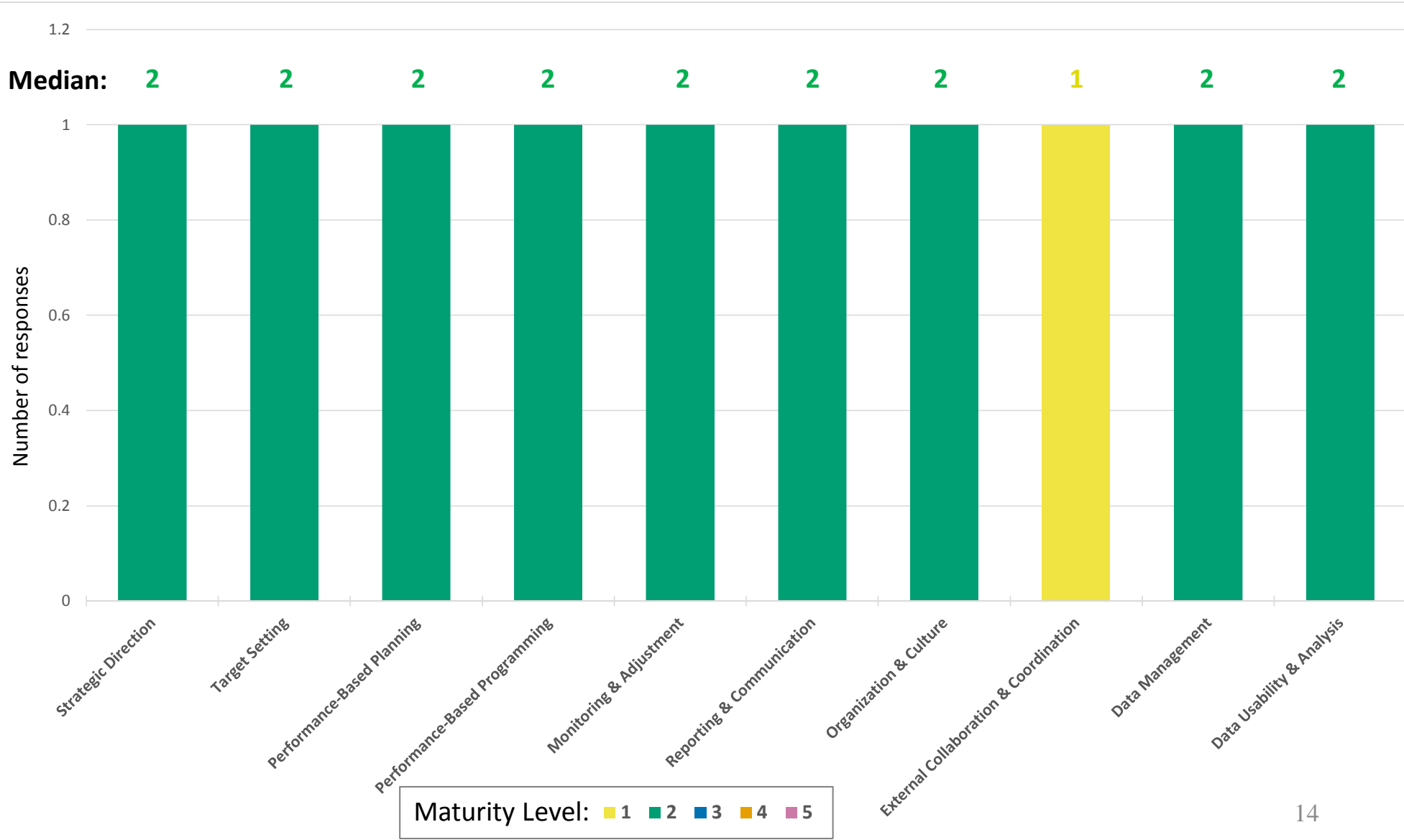
# *Assessment Results*

- State-wide aggregated results
- Compare to Utah DOT
- Charts show the distribution and median maturity levels for each component

# New Mexico DOT



# Utah DOT



# Comparison

