

TPM State Workshop

FHWA TPM Framework and Capability Maturity Model (CMM)

Little Rock, AR

January 26 & 27, 2017



U.S. Department of Transportation
Federal Highway Administration

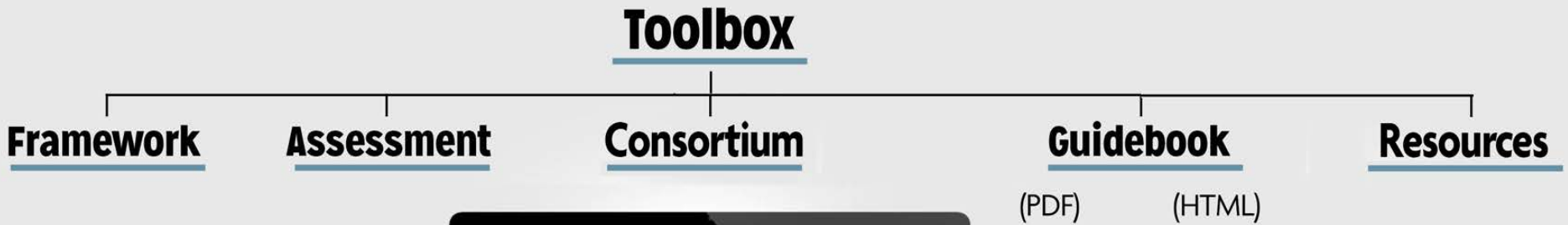


TPM Professional Capacity Building Program

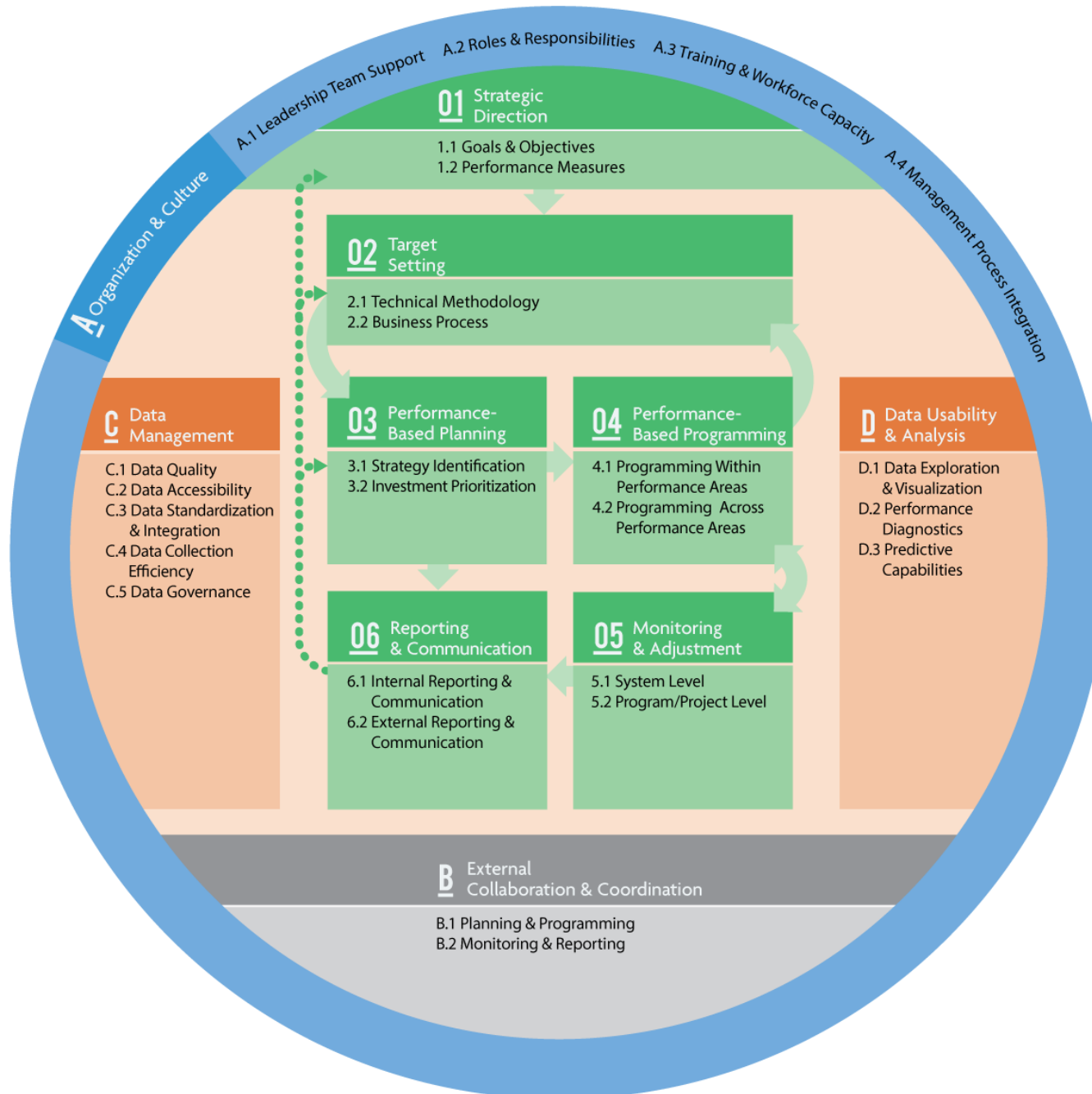
- Goal: to ensure transportation agencies and local partners are prepared to carry out performance-based decision-making
- Elements:
 - FHWA-sponsored training
 - **FHWA-sponsored workshops (like this one!)**
 - TPM capacity development pooled fund
 - TPM implementation review survey
 - Let's Talk Performance webinar series



Toolbox Elements

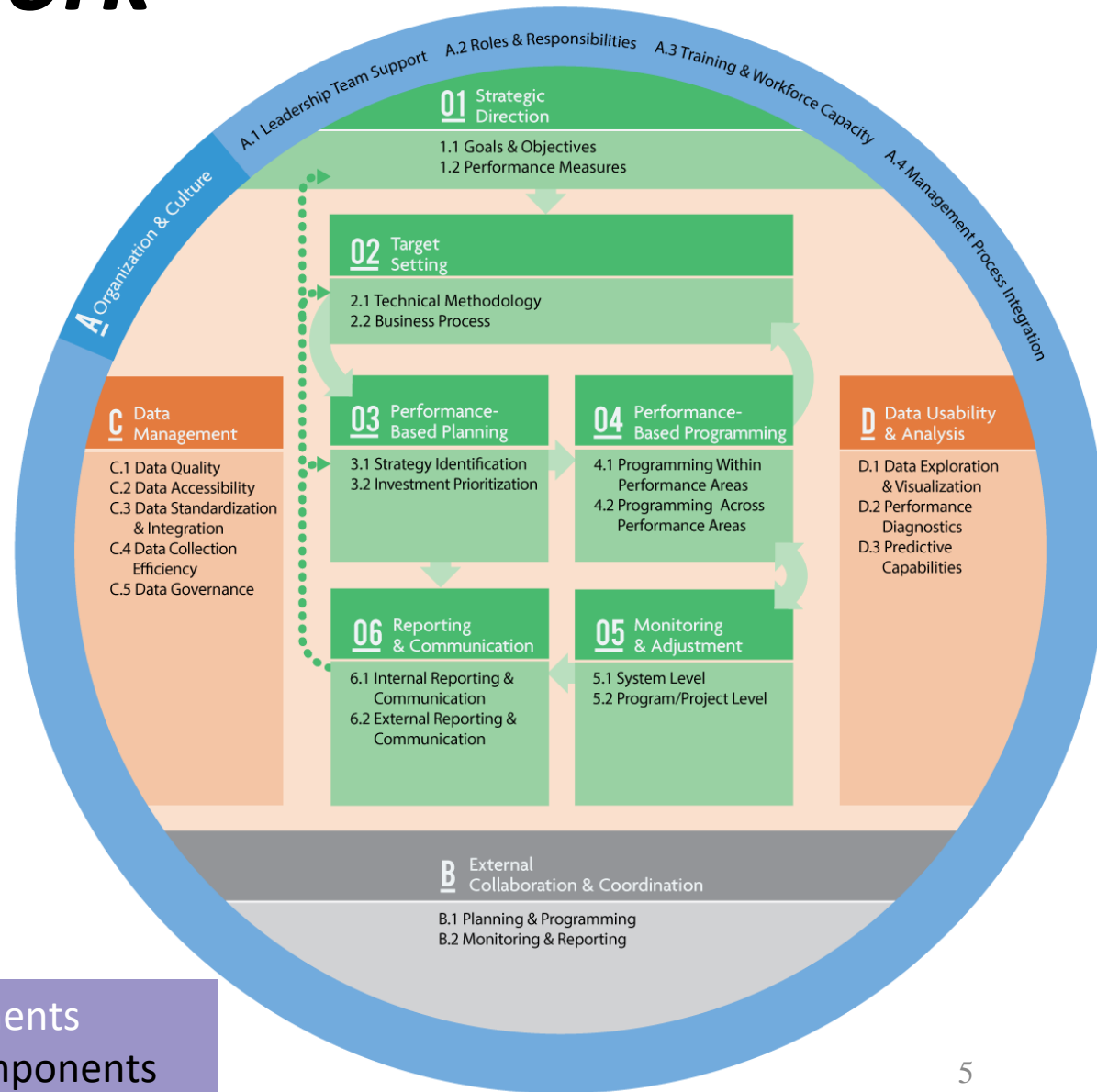
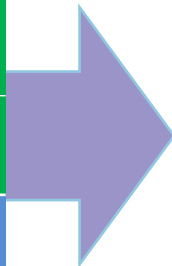


TPM Framework



TPM Framework

- 1. Strategic Direction
- 2. Target Setting
- 3. Performance-Based Planning
- 4. Performance-Based Programming
- 5. Monitoring & Assessment
- 6. Reporting & Communication
- A. Organization & Culture
- B. External Collaboration & Coordination
- C. Data Management
- D. Data Usability & Analysis



CMM has 10 components with 26 Subcomponents

Component 2: Target Setting



02 Target Setting

2.1 Technical Methodology

2.2 Business Process



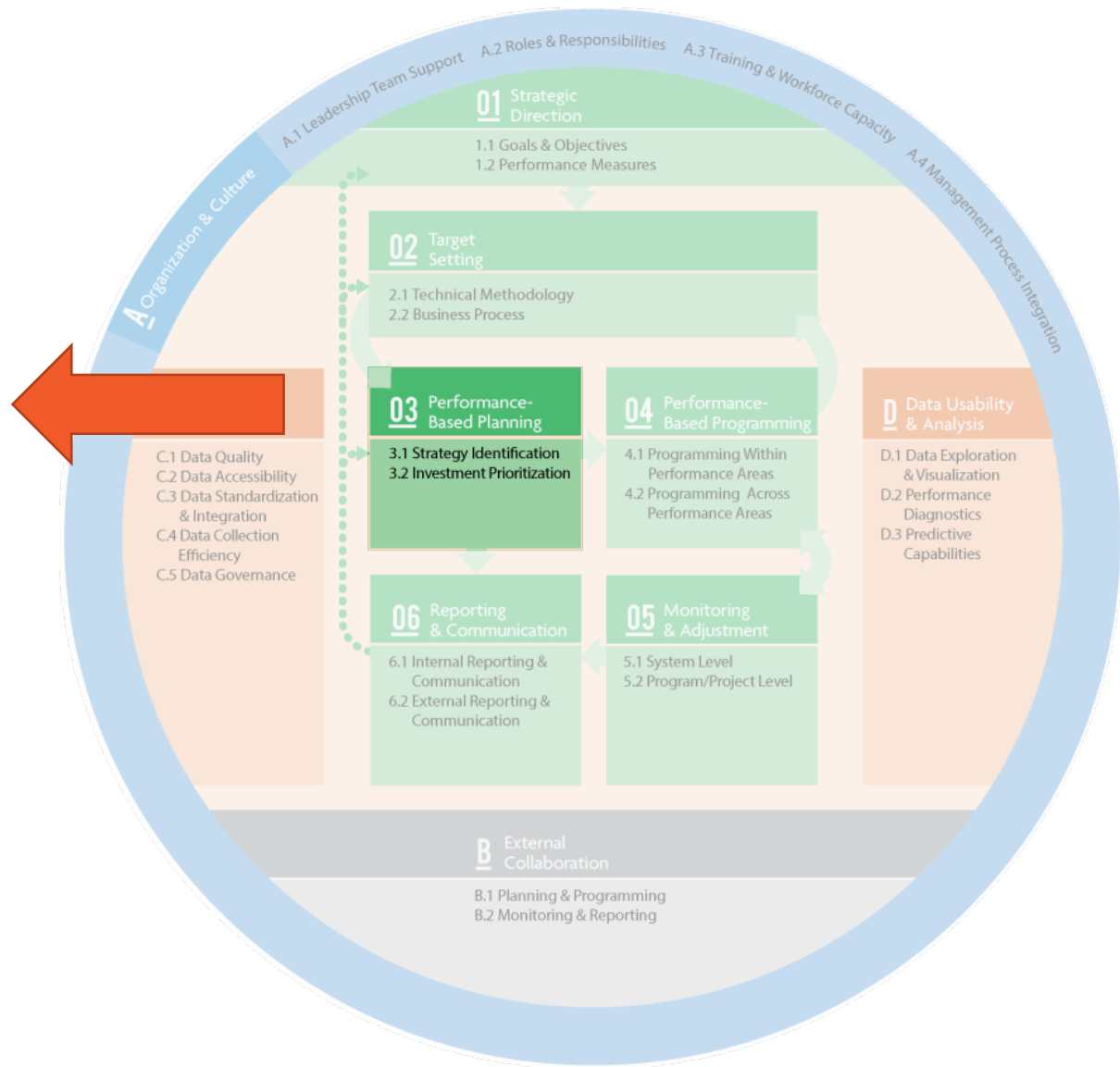
Component 3: Performance-Based Planning



03 Performance-Based Planning

3.1 Strategy Identification

3.2 Investment Prioritization



CMM: Capability Maturity Model

Purpose

- Assess current state of your agency
- Identify logical set of improvements
- Show benefit of moving to higher maturity levels

TPM CMM

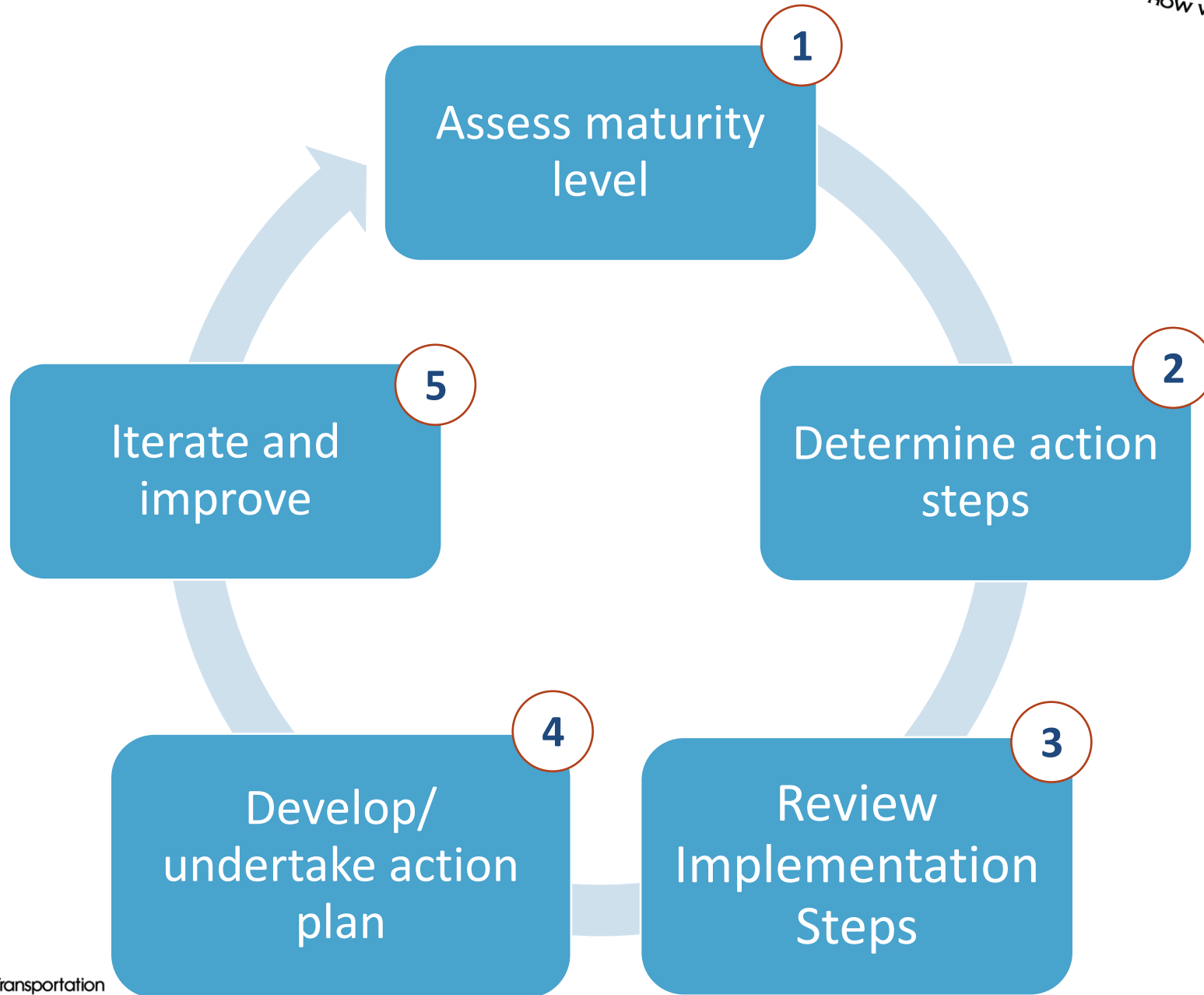
- Assesses maturity on 1-5 scale
- For each TPM Component



TPM CMM Levels of Maturity

Level	Definition
1. Initial	Ad hoc, uncoordinated, firefighting, champion-dependent
2. Developing	Nominal framework (e.g., organizational roles) being defined and systematic approaches starting to emerge
3. Defined	Framework and systems defined but not fully implemented or effectively supporting decision making
4. Functioning	TPM practices have been institutionalized , information used to guide actions, data improvements being pursued, basic predictive and tradeoff capabilities in place
5. Sustained	TPM will survive across new leadership, managers using performance information, data effectively managed, and external stakeholders view performance results as useful in promoting accountability and transparency

Implementation Process



Discussion: Assessment Results

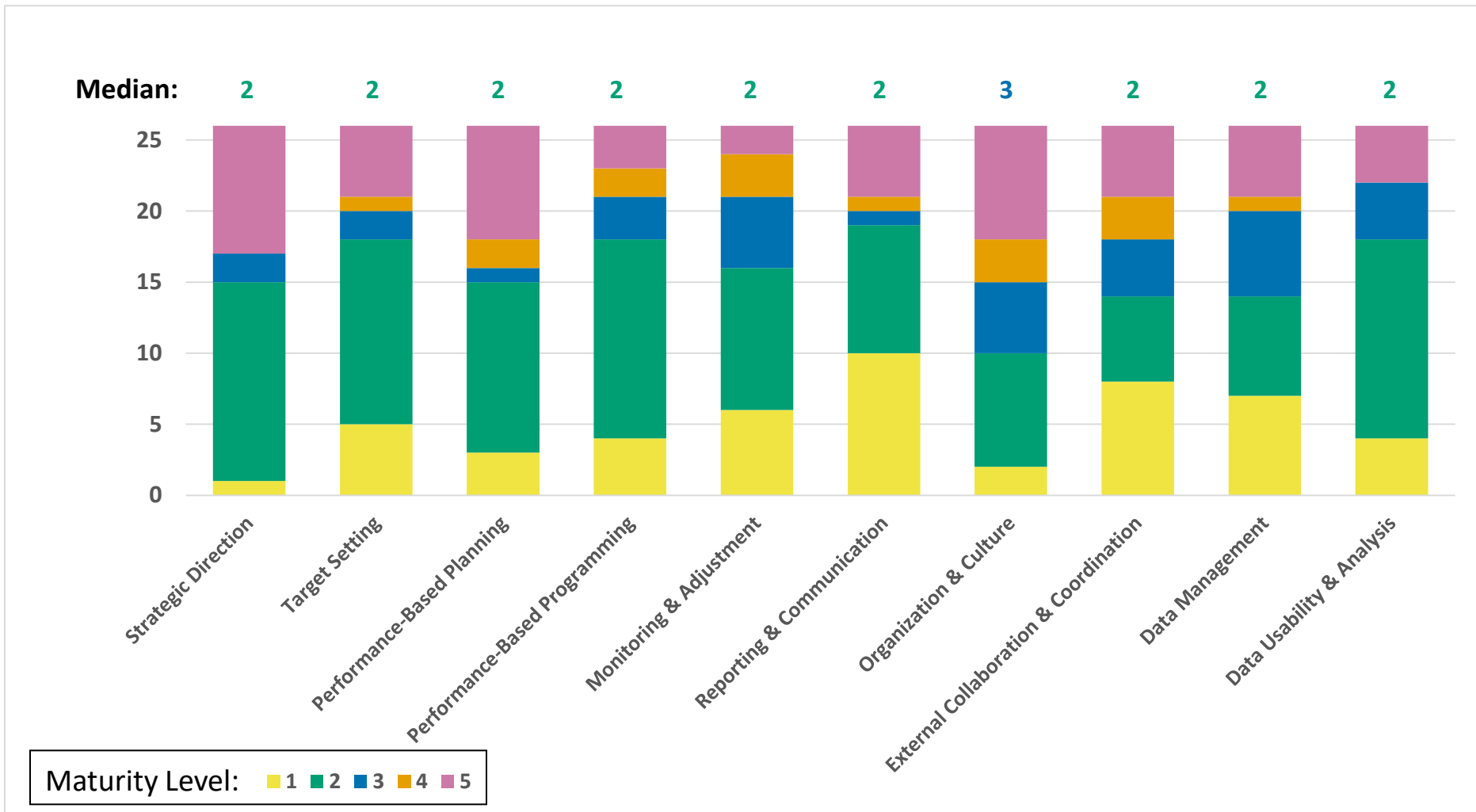


Assessment Results

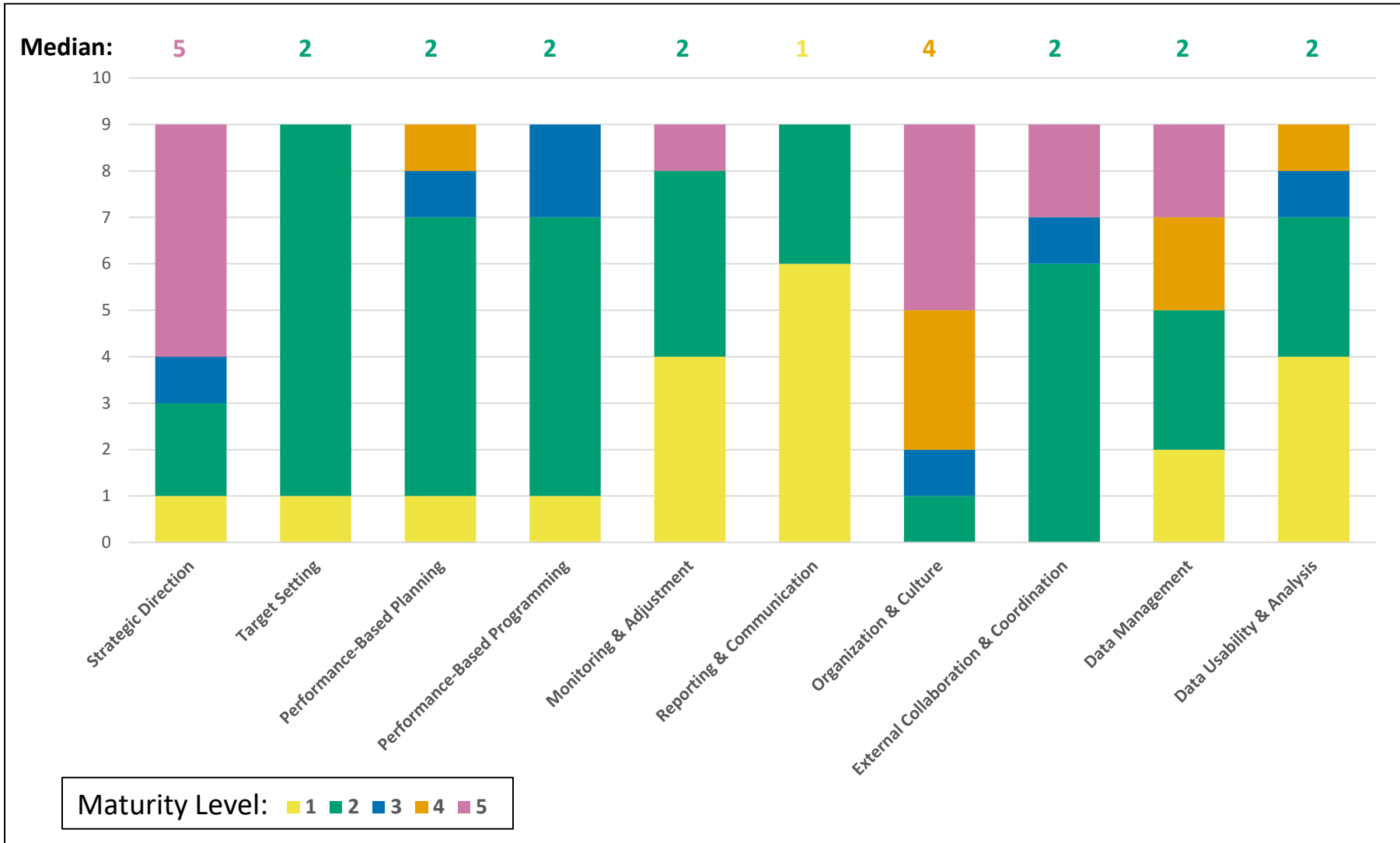
- Two sets of aggregated results
 - Arkansas HTD
 - All others
- Non-AHTD agencies will get individual results in later sessions
- Charts show the distribution and median maturity levels for each component



Arkansas HTD



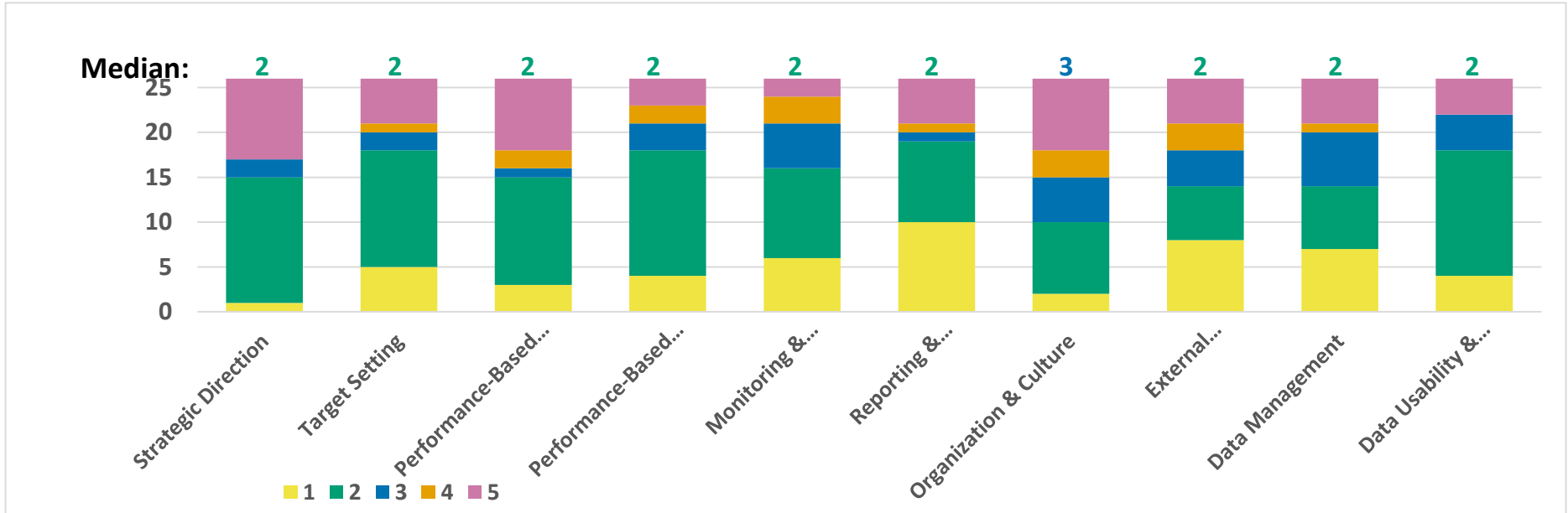
All Others



Comparison



Arkansas HTD



All Others

