

## TPM State Workshop

---

# *Component 4: Performance-Based Programming*

Cleveland, OH

July 20 & 21, 2017



U.S. Department of Transportation  
Federal Highway Administration



# Component 4: Performance-Based Programming



## 04 Performance-Based Programming

4.1 Programming Within Performance Areas

4.2 Programming Across Performance Areas

# Performance-Based Programming

- Definition: *The use of strategies and priorities to guide the allocation of resources to projects that are selected to achieve goals, objectives, and targets. Performance-Based Programming establishes clear linkages between investments made and expected outputs and outcomes.*



# Performance-Based Programming



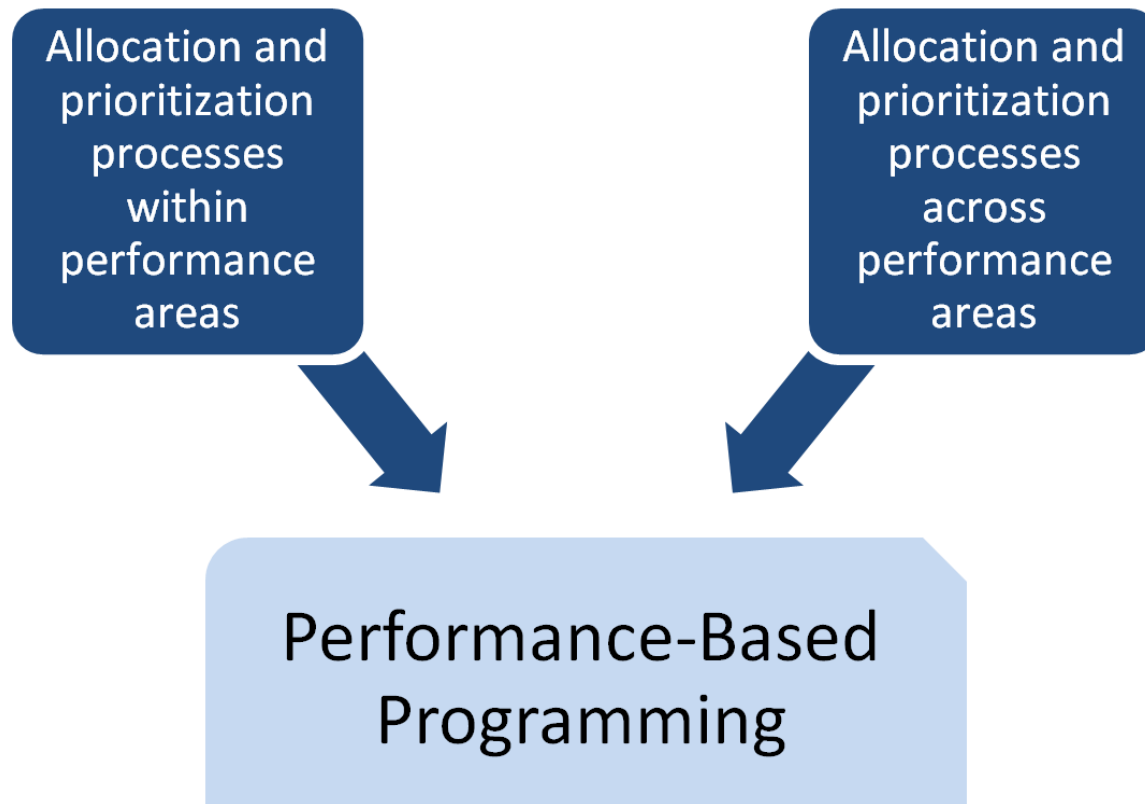
- Fund projects that will drive progress towards goals, objectives, and targets
- Links project selection to Strategic Goals via Performance-Based Plans
- Attempts to:
  - Incorporate influencing factors such as political context
  - Reduce silo-based programming
  - Consider funding constraints



# *Performance-Based Programming: Subcomponents*



- 4.1 Within Performance Areas
- 4.2 Across Performance Areas

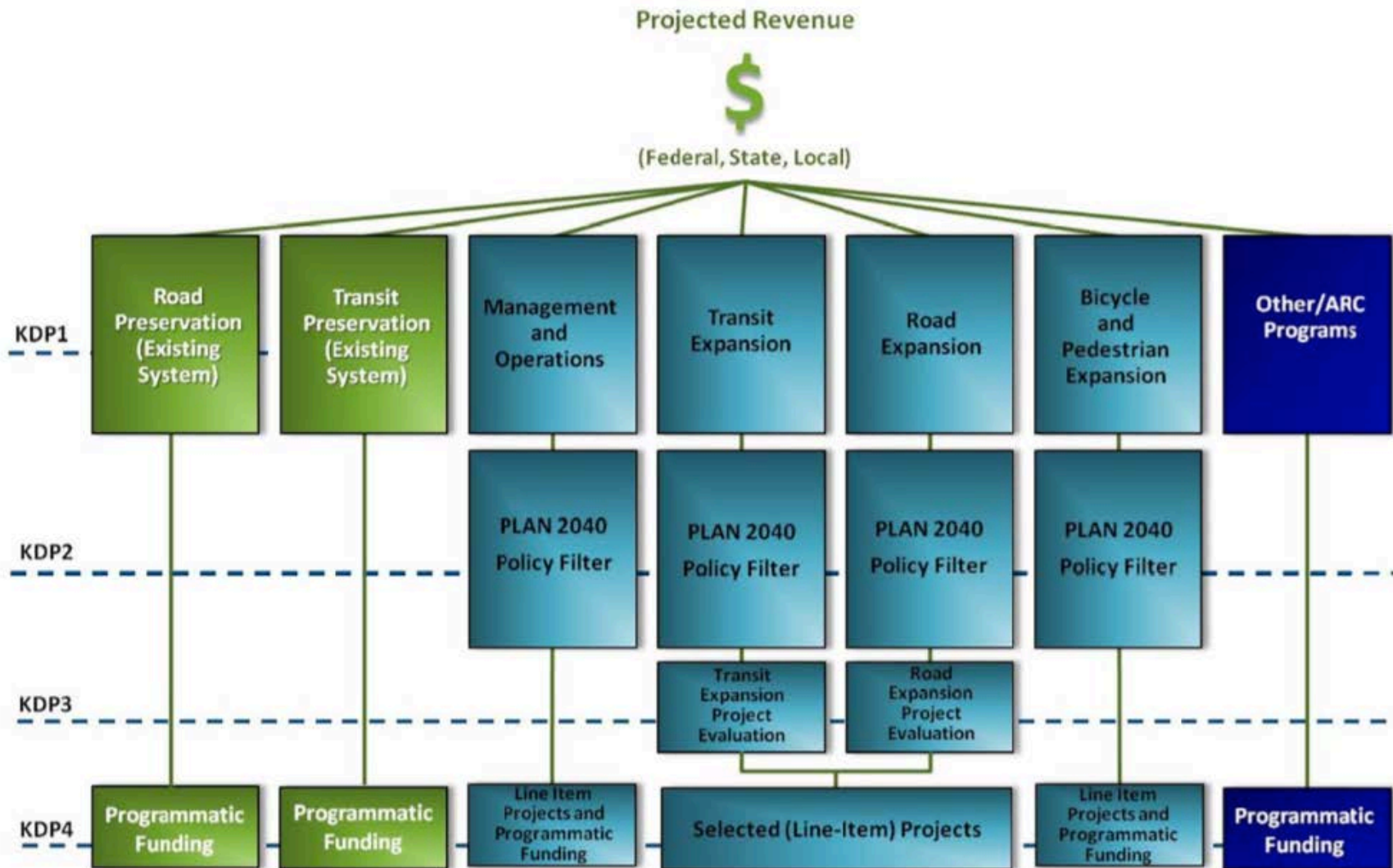


# Performance-Based Programming:



## Example 1

- Atlanta Regional Commission Funding Allocation



# Performance-Based Programming:



## Example 2

- VDOT: Area Typologies

Factor	Congestion Mitigation	Economic Development	Accessibility	Safety	Environmental Quality
Category A	45%	5%	15%	5%	10%
Category B	15%	20%	25%	20%	10%
Category C	15%	25%	25%	25%	10%
Category D	10%	35%	15%	30%	10%



# *Breakouts: Performance-Based Programming*





# *Breakout Exercise*

- Discuss **PB Programming** maturity level
  - Questions in handout (Exercise B)
  - Use Capability Maturity Model table (Exercise B)
- Select facilitator, note taker, and presenter
- Agency-specific groups
- Report out: share highlights of discussion

---

# *Report Out*

- Share highlights of discussion
- 4 min per group