

**Welcome to the New Performance Management Paradigm:
A World of Challenge and Opportunity**

Performance-Based Federal Highway Program

Jack Lord

Federal Highway Administration

July 2017



U.S. Department of Transportation
Federal Highway Administration



Our Time Today



- TPM Professional Capacity Building Activities
 - Resources You Can Use
 - Specific Implementation Support



Strategic Approach



Define

- Partner Needs and Input
- Requirements Driven (Regulations and Guidance)
- Informational Materials

Develop

- Multi-Tier approach
- Flexible
- Responsive
- Technology Savvy
- Proven Effective Practices

Deliver

- Formal and Tailored Training
- Peer Dialogue and Exchange
- Technical Assistance
- Virtual Events
- Videos & Websites
- Tools



Resources You Can Use

- Training
- Technical Assistance
 - Tailored Support
 - Peer Exchanges
- Informational Materials
 - Guidance
 - Guidebooks
- Websites



TPM Implementation Support: Training Workshops

Asset Management, PM2 and PM3 Rule Implementation Regional Sessions

- Kansas City, MO, June 20-23 (Midwest States)
- Raleigh, NC (South)
- Cambridge, MA (North)
- Phoenix, AZ (West)
- 1 Optional National Workshop– Washington D.C.

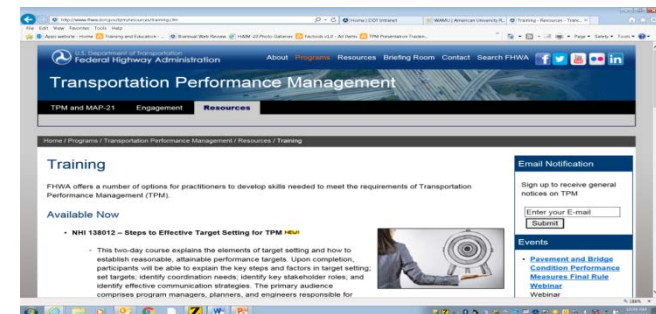


TPM Implementation Support: *Formal Training*



NHI In-Person Courses Available Now:

- Overview of MAP-21 TPM (w/ FAST Act Updates)
- TPM for Safety
- Performance-based Planning and Programming
- Steps to Effective Target Setting
- Data Management for TPM



TPM Implementation:

Assessment Workshops

TPM Capability Maturity Model (CMM)

- Workshop and Guidebook
- Self-Assessment Tool
- Other Assistance Available Upon Request



TPM Implementation: Technical Assistance

Delivery Approaches

- Tailored Workshops/Webinars
- Videos
- Peer Exchanges/Peer Dialogue

Example Topics

- Strategic Direction/Scenario Analysis
- Data Management
- Analytical Tools
- Target Setting
- Coordination



TPM Implementation: Technical Assistance



National Webinars

- Final Rule Webinars
 - Recordings Available

- FHWA Let's Talk Performance Series
 - Topical Sessions on Key TPM Topics
 - TAMP and Risk Management (August 9, 2017)
 - Target Setting Coordination (June 2017)
 - Basics of Target Setting (July 2016)



TPM Implementation:

Technical Assistance

Formal Peer Exchange Programs

- Learn from DOT/MPO/Transit Peers
- Apply for:
 - FHWA TPM Professional Capacity Building Program
 - FHWA Transportation Planning Capacity Building Program
 - FHWA Scenario Planning Peer Exchange Workshop



TPM Implementation: Informational Materials

Cross-Cutting and Program Specific

- Guidance and Technical Advisories
- Guidebooks
- Fact Sheets
- Noteworthy Practices



TPM Implementation: Informational Materials

Technical Advisories

- Asset Management Plan Q&A
- S/TIP Performance-Based Discussion
- LRTP System Performance Report
- Linking Targets to Long Term Expectations

Guidebooks and Effective Practices

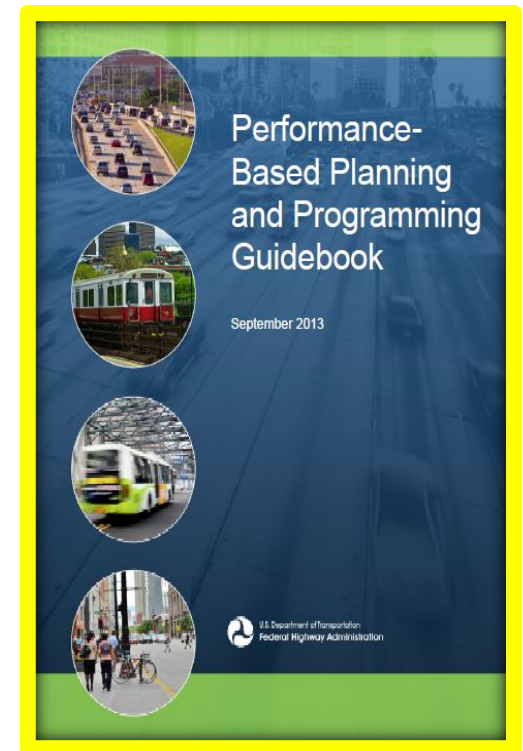
- Target Setting
- Investment Plans
- Freight Performance at Bottlenecks



Performance Based Planning and Programming Guidebook

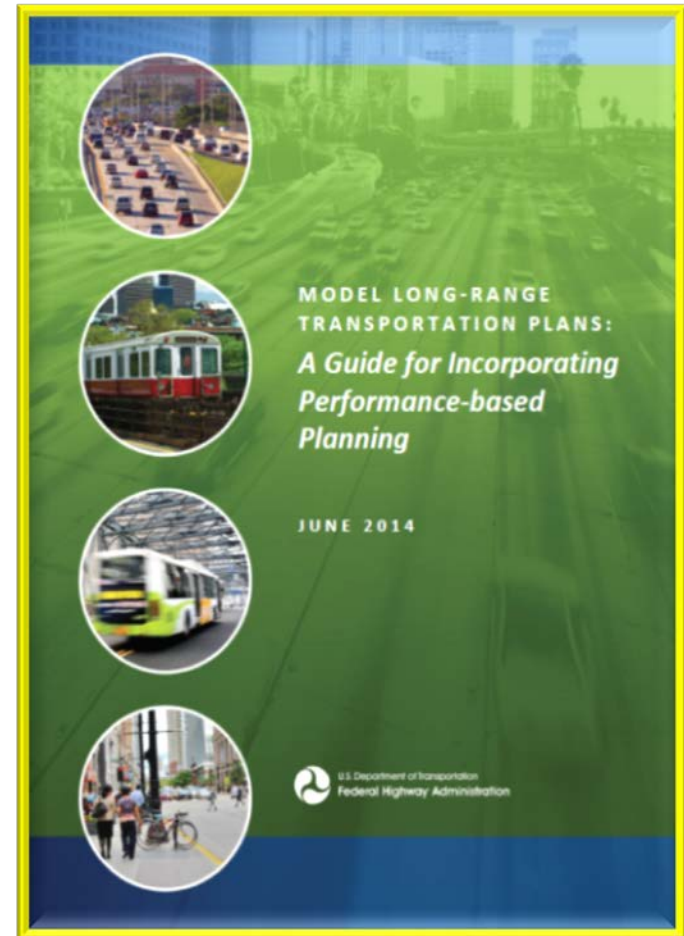


- Practical Resource Focused on PBPP Elements
- Highlights Effective Practices
 - State DOTs, MPOs, Transit Agencies
- Reviews Connections with Other State/Regional Plans/Processes
 - Examples:
 - Strategic Highway Safety Plan
 - CMP
 - Asset Management Plans



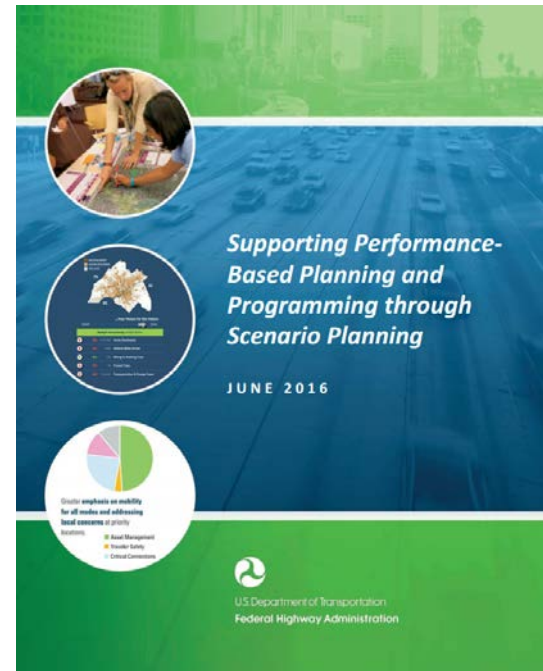
Model Long Range Plan: Guide for Incorporating PBPP

- Detailed Information About Developing a Performance-based Statewide Long-range Metropolitan Transportation Plan
- Especially Helpful for:
 - Performance Measures
 - Preferred Trends and Targets
 - System Performance Report



Supporting PBPP Through Scenario Planning

- Array of Scenario Analytical Tools to Be Used at Various PBPP Steps
- Good Case Studies!



Available at

<http://bit.ly/2qaNGi3>

Your Go-To Resource



- Visit <http://www.fhwa.dot.gov/tpm/>
 - Informational Materials
 - Training
 - Technical Assistance
 - Peer Exchange Info
 - Effective Practices
 - Videos; and
 - MORE to Come.....

A screenshot of the TPM Toolbox Beta Release Website. The page has a blue header with the U.S. Department of Transportation Federal Highway Administration logo and navigation links: About, Programs, Resources, Briefing Room, Contact, Search FHWA. Below the header is a navigation bar with 'TPM and MAP-21', 'Engagement', and 'Resources'. The main content area features a large heading 'TPM Toolbox Beta Release Website' and a circular graphic. A sidebar on the right contains 'Related Links' (FHWA/DOJ TPM-related Links, TPM External links) and 'Contacts' (Susanna Hughes-Reck, Office of Transportation Performance Management, 202-366-1549, Email: Susanna). At the bottom, there are four columns of content: 'Implementation' (What is TPM?, National Goals, MAP-21 Putting Performance into Action (pdf, 1.3 mb), Implementation Schedule (pdf, 0.1 mb), TPM Rulemakings, Guidance), 'Engagement' (Rulemaking Stakeholder Engagement, Reporting), 'Resources' (Apply for P2P Technical Assistance, Noteworthy Practices, Presentations and Webinars, Publications, Tools, TPM Digest, Training), and 'Email Notification' (Subscribe to email updates) and 'Calendar' (View the TPM calendar).



Publications

Filters

Components

- [Component 1: Strategic Direction](#) (32)
- [Component 2: Target Setting](#) (35)
- [Component 3: Performance-Based Planning](#) (24)
- [Component 4: Performance-Based Programming](#) (19)
- [Component 5: Monitoring and Adjustment](#) (29)
- [Component 6: Reporting and Communication](#) (25)
- [Component A: Organization and Culture](#) (26)
- [Component B: External Collaboration](#) (32)
- [Component C: Data Management](#) (42)
- [Component D: Data Usability and Analysis Capabilities](#) (23)

TPM Areas

- [Environment](#) (1)
- [General](#) (000)

Matching Publications

1. [FHWA Index of Legislation, Regulations, and Guidance](#)
2. [49 CFR 613 – PLANNING ASSISTANCE AND STANDARDS](#)
3. [23 CFR 450.210 – COORDINATION.](#)
4. [Transportation Article Section 2-103.1 of the Annotated Code of Maryland](#)
5. [Strategic Transportation Investments](#)
6. [23 U.S.C. 135 – STATEWIDE TRANSPORTATION PLANNING](#)
7. [23 U.S.C. 150 – REPEALED. PUB. L. 105-178, TITLE I, §1103\(L\)\(5\), AS ADDED PUB. L. 105-206, TITLE IX, §9002\(C\)\(1\), JULY 22, 1998, 112 STAT. 834](#)
8. [Performance Measurement: Getting Results](#)
9. [Interim Guidance on National Performance Measure Development](#)
10. [Measuring Performance among State DOTs: Sharing Good Practices](#)
11. [Measuring Performance Among State DOTs](#)
12. [MN TZD Mission, Goals, & Values](#)
13. [Target-Setting Workshop](#)
14. [SCOPM Task Force Findings on MAP-21 Performance Measure Target-Setting](#)
15. [About HB2](#)
16. [HB2 Implementation Policy Guide](#)
17. [Keeping Score for the Game our Customers Care About](#)
18. [Traffic Flow Data Program R009, Agreement for Use of Data](#)
19. [Vital Signs – Greenhouse Gas Emissions](#)
20. [Metro Regional Centerline Collaborative](#)




COMMUNICATING PERFORMANCE

This site provides tools to support transportation agencies' performance management communication and reporting. You can use the site to discover examples of noteworthy performance management communications and to access selected guidance for practitioners. To get started,

tpm-portal.com



ROADMAP LIBRARY ADMIN

Browse a curated collection of no communications examples in an searchable database. Enter specific criteria and view matching examples.

BROWSE COMMUNICATIONS RESOURCES

Transportation Performance Management Research Roadmap

The Transportation Performance Management (TPM) Research Roadmap identifies the information needed, and future research needed, to improve coordination between transportation agencies and stakeholders. The portal to help identify research needs and methodologies to address them.

Information

There are multiple ways that a seeker of information can find TAM knowledge today.

VIEW MORE INFO LEARN ABOUT TAM

size completed, will enable increased users alike can use the d analysis

Projects in the Roadmap

1 Active Projects	 TAM Documents A searchable database of documents with curated resources indexed by TAM business processes, asset types, audience, and other factors.	 TAM Events Listings for conferences, meetings, webinars, peer exchanges and other events of interest to the transportation asset management community.	 TAM Tools A new area of the site, still under development, that will spotlight new and well-established tools for making transportation asset management simpler, easier, and more effective.	 TAM Roadmap A new area of the site, still under development, that will feature information on what new and what's next for the transportation asset management community.	5 Submitted Concepts/Pool
-----------------------------	---	---	--	--	-------------------------------------

This Roadmap has been created by the Transportation Performance Management Research Committee (TPMRC) under NCHRP 20-24(97) is to develop a Transportation Performance Management (TPM) Research Roadmap. The objective of Project 20-24(97) is to develop a Transportation Performance Management (TPM) Research Roadmap. The objective of Project 20-24(97) is to develop a Transportation Performance Management (TPM) Research Roadmap.

FEATURED RESOURCES

Integrating Climate Change and Extreme Weather Into Transportation Asset Management Plans	TAM Webinar 17: Transportation Asset Management and Risk Management	AASHTO Transportation Asset Management Gap Analysis Tool
---	---	--



http://www.fhwa.dot.gov/tpm/links_external.cfm



Transportation Performance Management

[TPM and MAP-21](#) [Engagement](#) [Resources](#)

[Home](#) / [Programs](#) / [Transportation Performance Management](#) / [External TPM-related Links](#)

External TPM-related Links

[TPM Dashboards](#) | [Performance Measures and Reports](#) | [Planning and Asset Management](#) | [Safety and Mobility](#) | [Research and Innovation](#) | [Education, Events, Workshops, and Webinars](#) | [Washington State DOT MAP-21 Resources](#)

TPM Dashboards

- [Alaska DOT Dashboard](#)
- [Chicago DOT Dashboard](#)
- [City of Boston Dashboard](#)
- [City of Fort Collins](#)
- [City of Phoenix Dashboard](#)
- [City of Seattle Dashboard](#)
- [City of Williamsburg, VA Dashboard](#)
- [Colorado DOT Dashboard](#)
- [Council of State Governments Dashboard](#)

Email Notification

Sign up to receive general notices on TPM

Events

- [Lets Talk Performance: Safety Target Setting and Coordination Webinar](#)
Webinar
September 20, 2016

The New Performance Management Paradigm: A World of Challenge and Opportunity

Questions?

Thank You

