

## TPM State Workshop

---

# ***FHWA TPM Framework and Capability Maturity Model (CMM)***

Carson City, NV

August 16 & 17, 2017



U.S. Department of Transportation  
Federal Highway Administration



# ***TPM Professional Capacity Building Program***

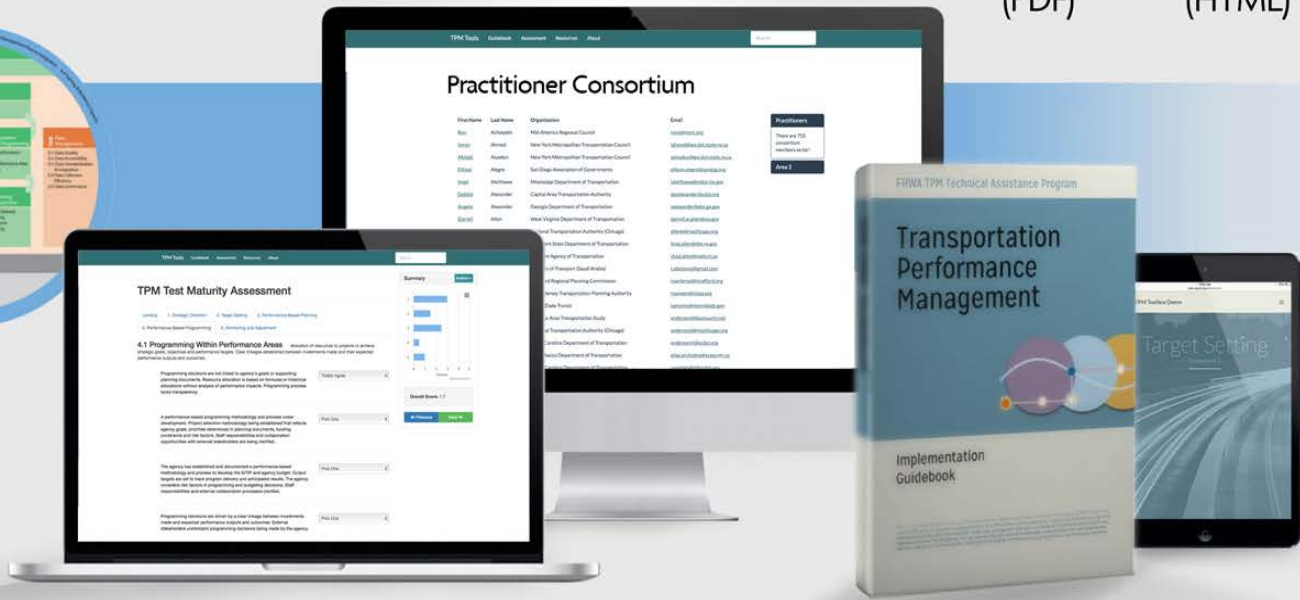
---



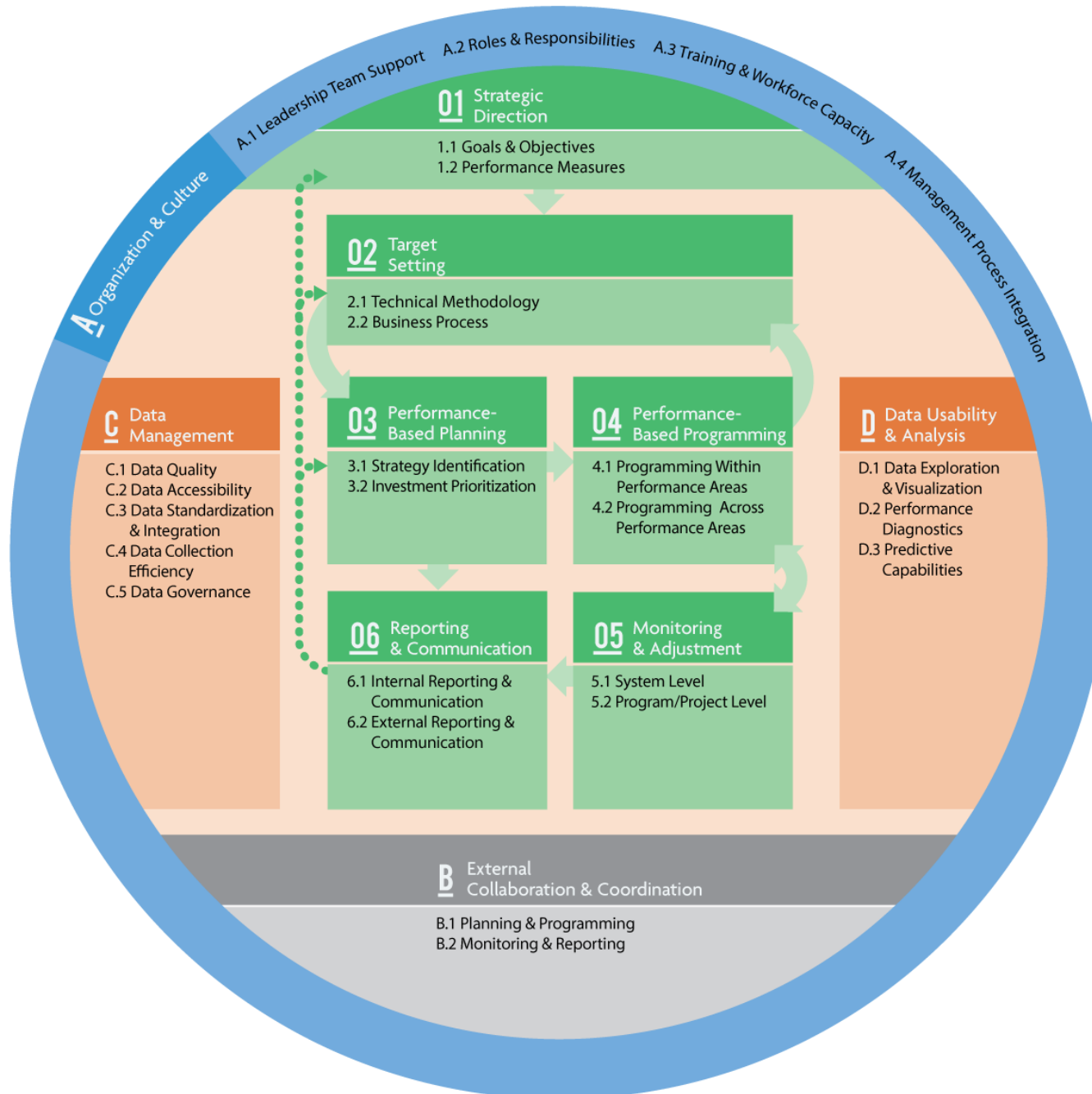
- Goal: to ensure transportation agencies and local partners are prepared to carry out performance-based decision-making
- Elements:
  - FHWA-sponsored training
  - **FHWA-sponsored workshops (like this one!)**
  - TPM capacity development pooled fund
  - TPM implementation review survey
  - Let's Talk Performance webinar series



# Toolbox Elements



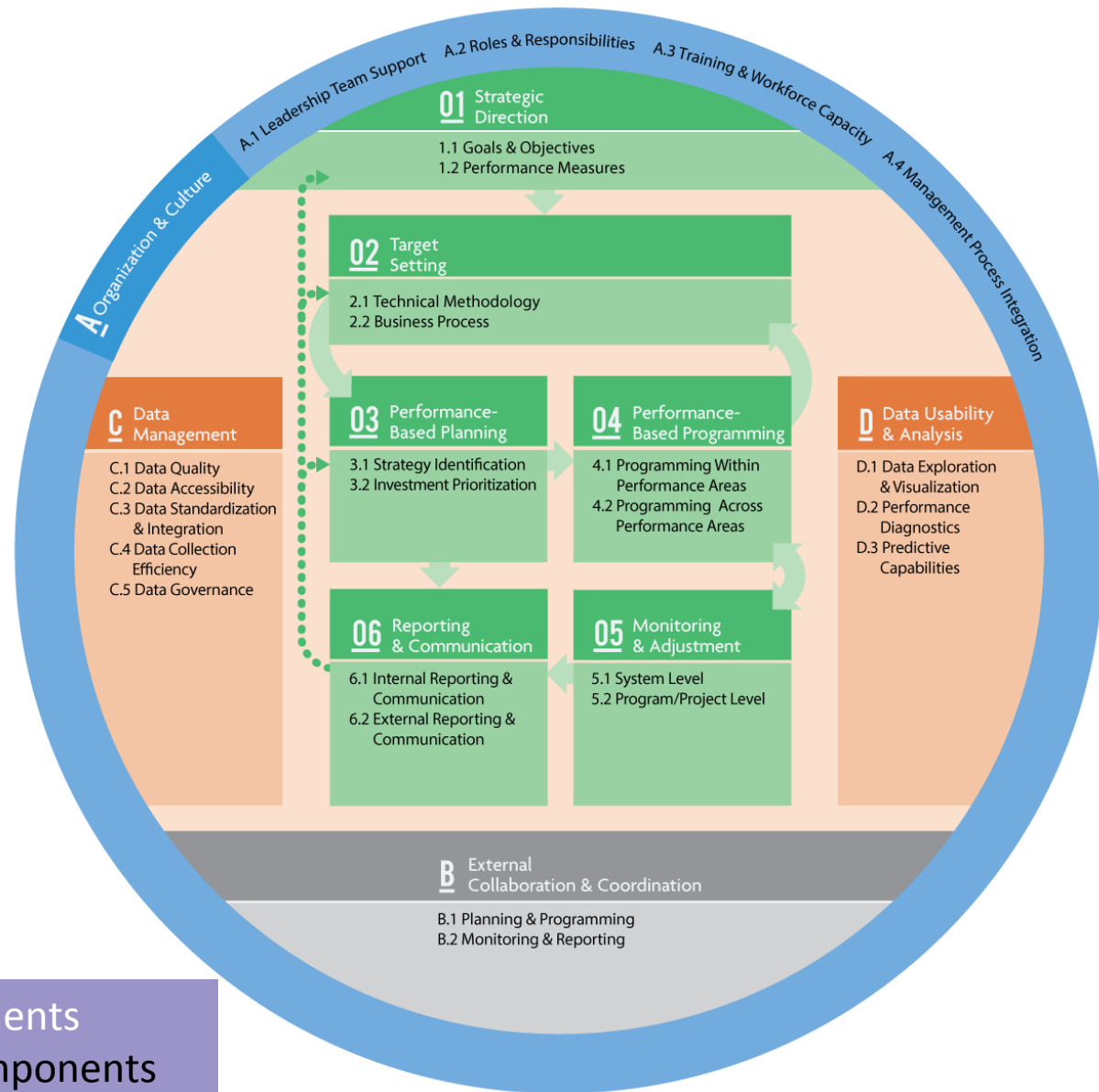
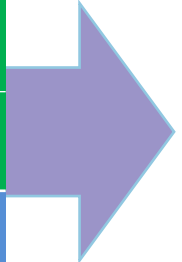
# TPM Framework



# TPM Framework

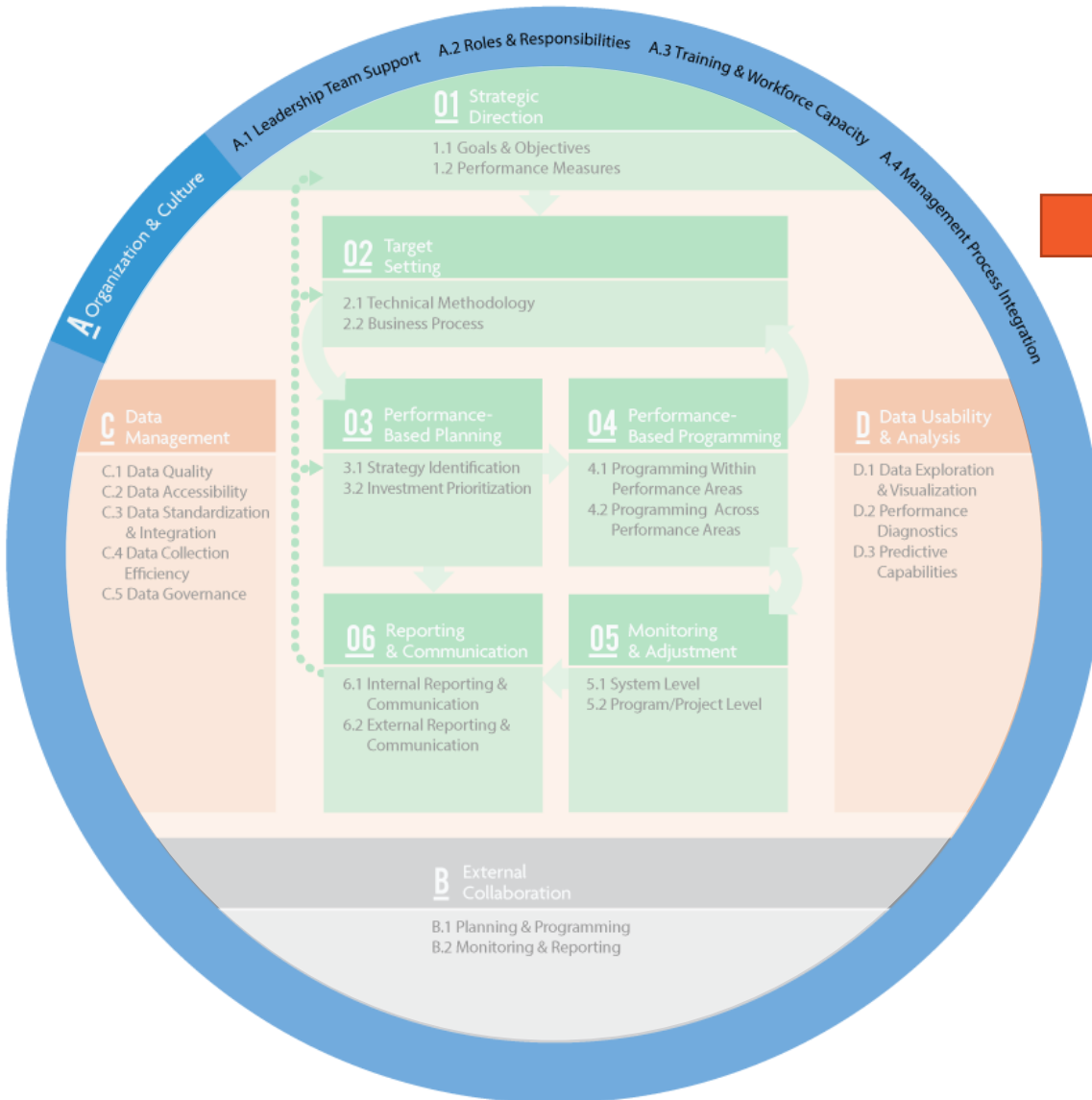


- 1. Strategic Direction
- 2. Target Setting
- 3. Performance-Based Planning
- 4. Performance-Based Programming
- 5. Monitoring & Assessment
- 6. Reporting & Communication
- A. Organization & Culture
- B. External Collaboration & Coordination
- C. Data Management
- D. Data Usability & Analysis



CMM has 10 components with 26 Subcomponents

# Component A: Organization and Culture



## A Organization & Culture

A.1 Leadership Team Support

A.2 Roles and Responsibilities

A.3 Training and Workforce Capacity

A.4 Management Process Integration

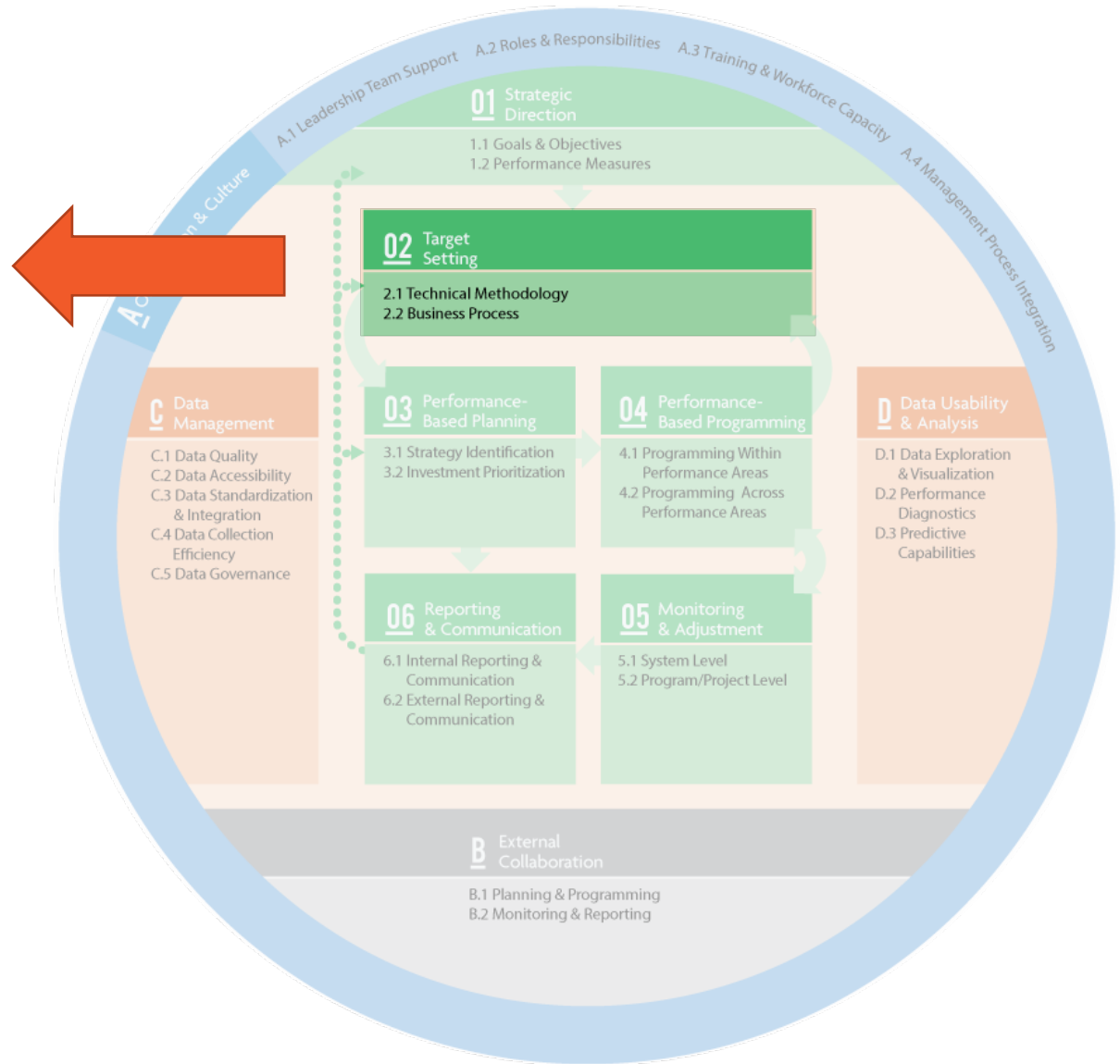
# Component 2: Target Setting



**02 Target Setting**

2.1 Technical Methodology

2.2 Business Process



# CMM: Capability Maturity Model



## Purpose

- Assess current state of your agency
- Identify logical set of improvements
- Show benefit of moving to higher maturity levels

## TPM CMM

- Assesses maturity on 1-5 scale
- For each TPM Component





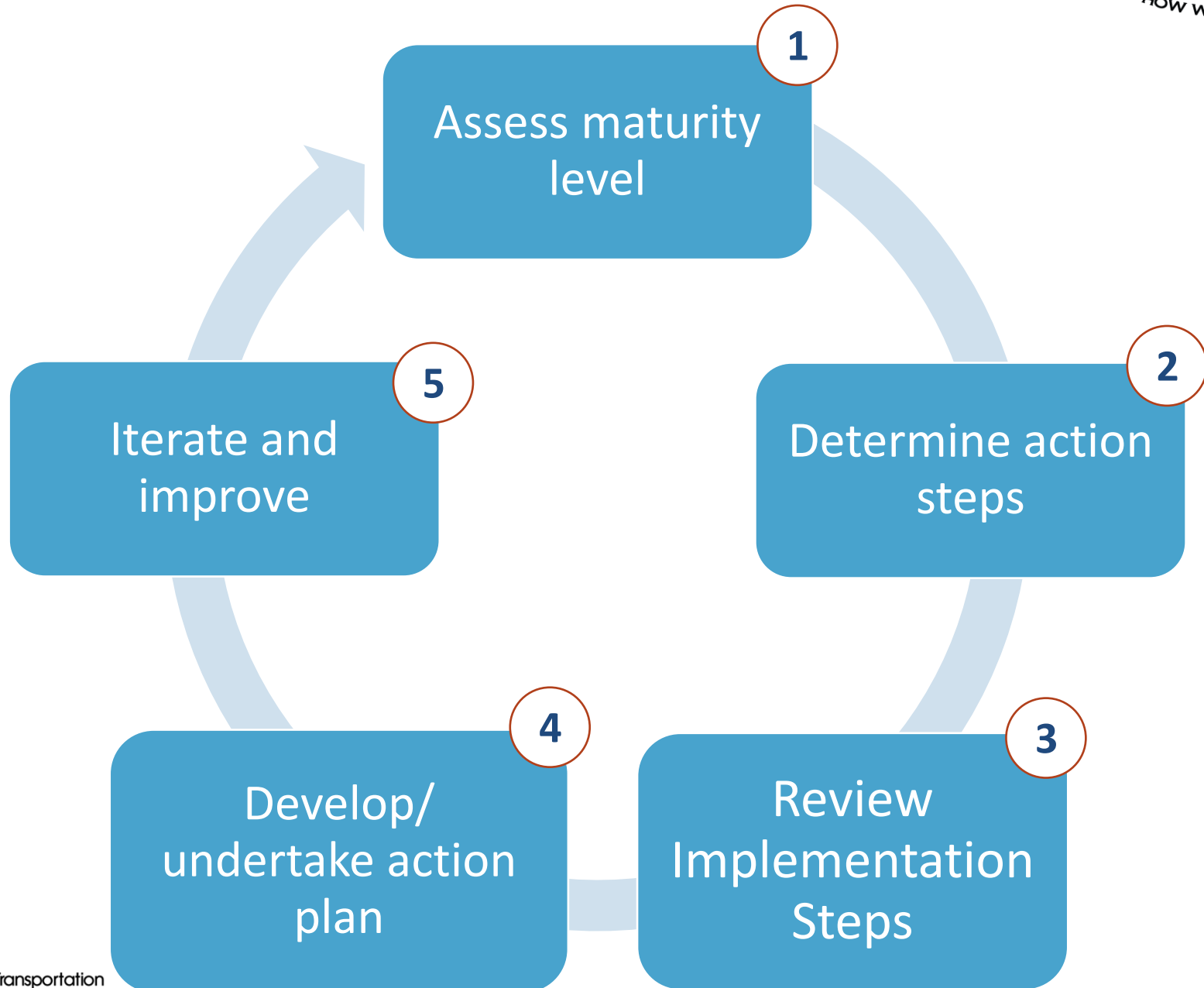
# TPM CMM Levels of Maturity



Level	Definition
1. Initial	Ad hoc, uncoordinated, firefighting, champion-dependent
2. Developing	Nominal framework (e.g., organizational roles) being defined and systematic approaches starting to emerge
3. Defined	Framework and systems defined but not fully implemented or effectively supporting decision making
4. Functioning	TPM practices have been institutionalized, information used to guide actions, data improvements being pursued, basic predictive and tradeoff capabilities in place
5. Sustained	TPM will survive across new leadership, managers using performance information, data effectively managed, and external stakeholders view performance results as useful in promoting accountability and transparency



# Implementation Process



# *Discussion: Assessment Results*



# Assessment Results

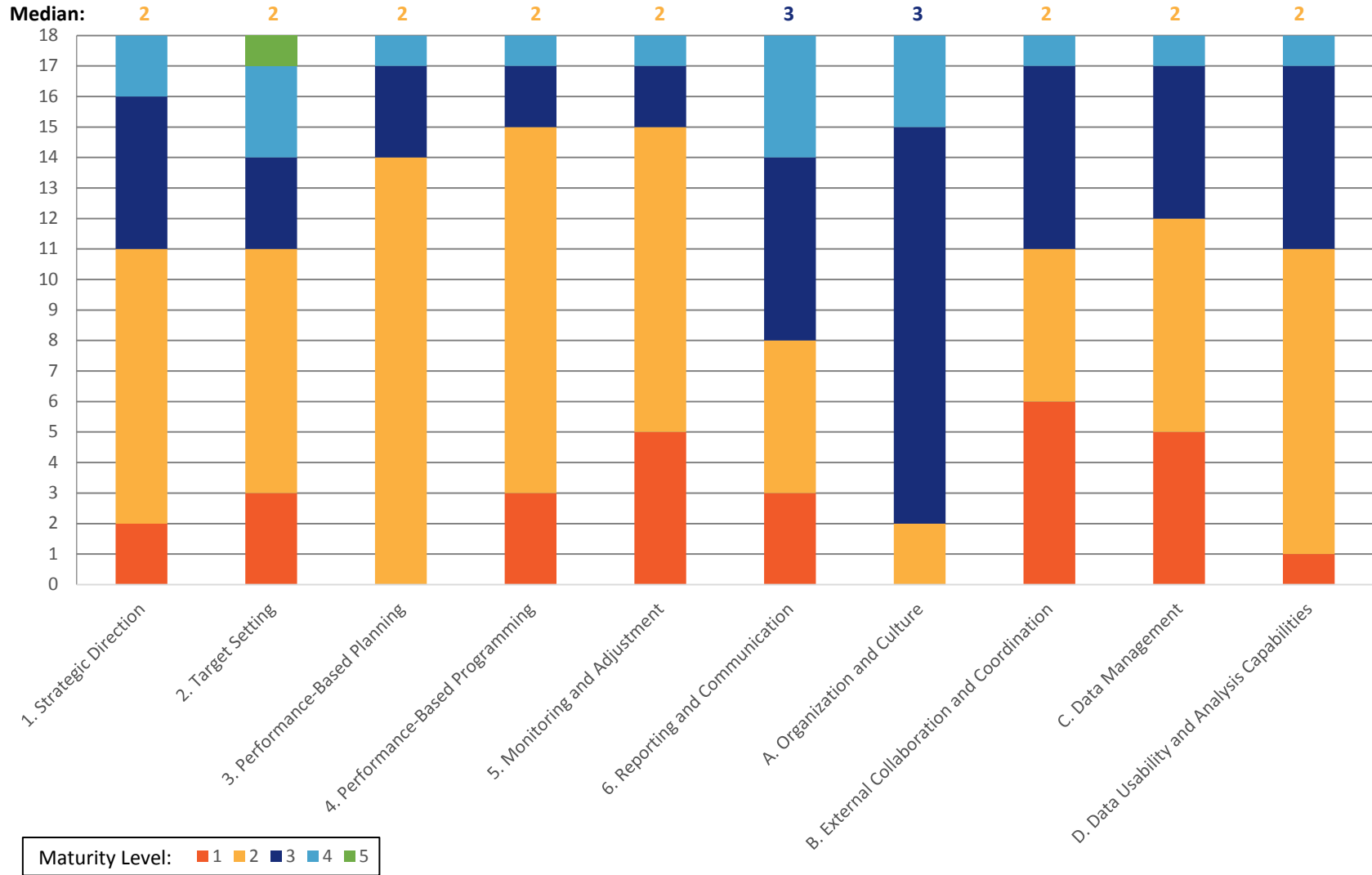
---



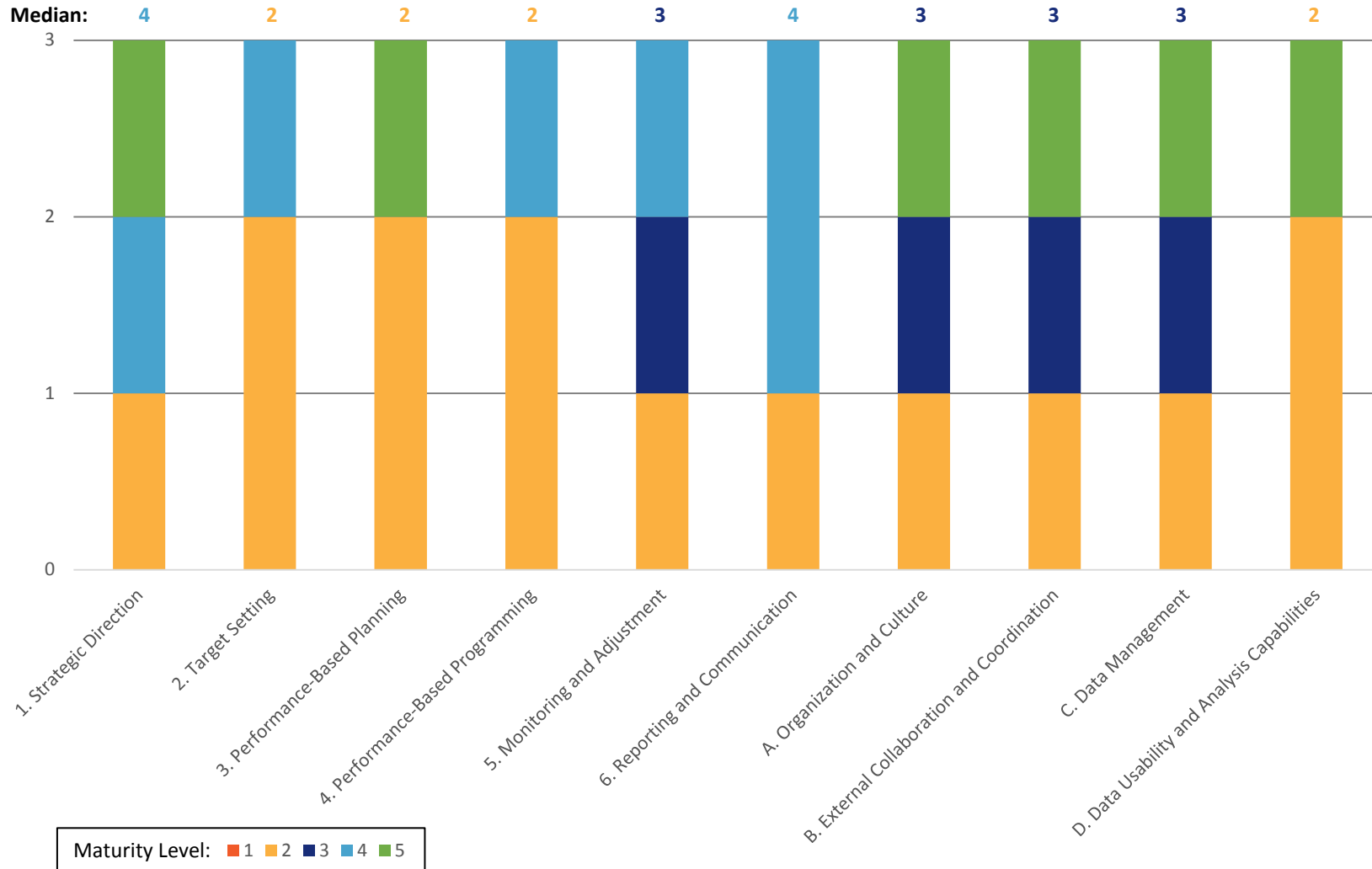
- Two sets of aggregated results
  - Nevada DOT
  - RTCs / MPOs
- Non-NDOT agencies will get individual results in later sessions
- Charts show the distribution and median maturity levels for each component



# Nevada DOT



# MPOs / RTCs



# Comparison



Nevada DOT

MPOs/RTCs

