

TPM State Workshop

---

# *Components 3 & 4: Performance-Based Programming*

Sandy, UT

November 6-7, 2017



U.S. Department of Transportation  
Federal Highway Administration



# Component 3: Performance-Based Planning

**03 Performance-Based Planning**

3.1 Strategy Identification

3.2 Investment Prioritization



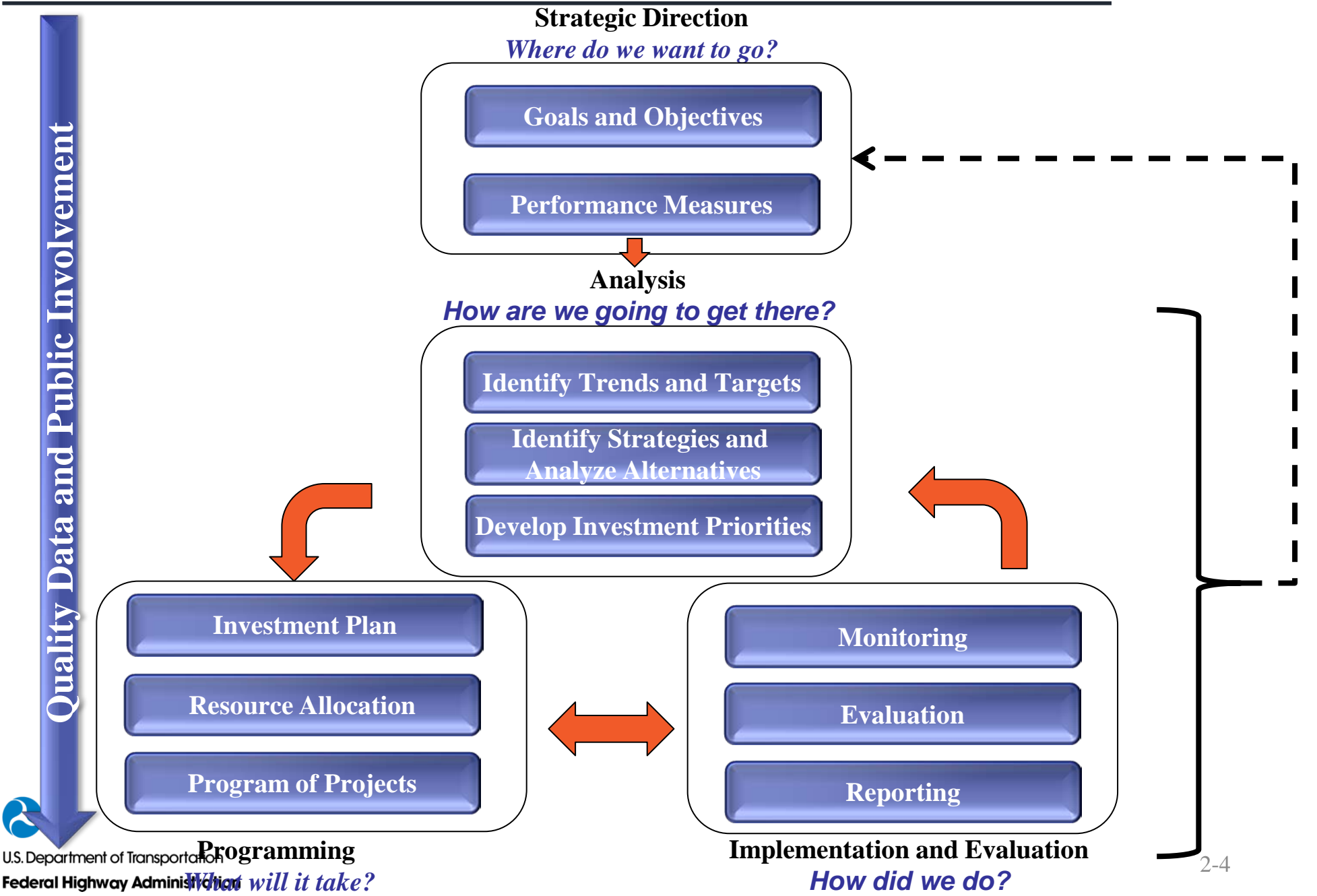
# Performance-Based Planning

- Definition: *The use of agency goals and objectives and performance trends to drive the development of strategies and priorities in the long-range transportation plan and other performance-based plans and processes. The resulting planning documents become the blueprint for how an agency intends to achieve its desired performance outcomes.*



# Performance-Based Planning and Programming

## PLANNING



# ***Performance-Based Planning***

---

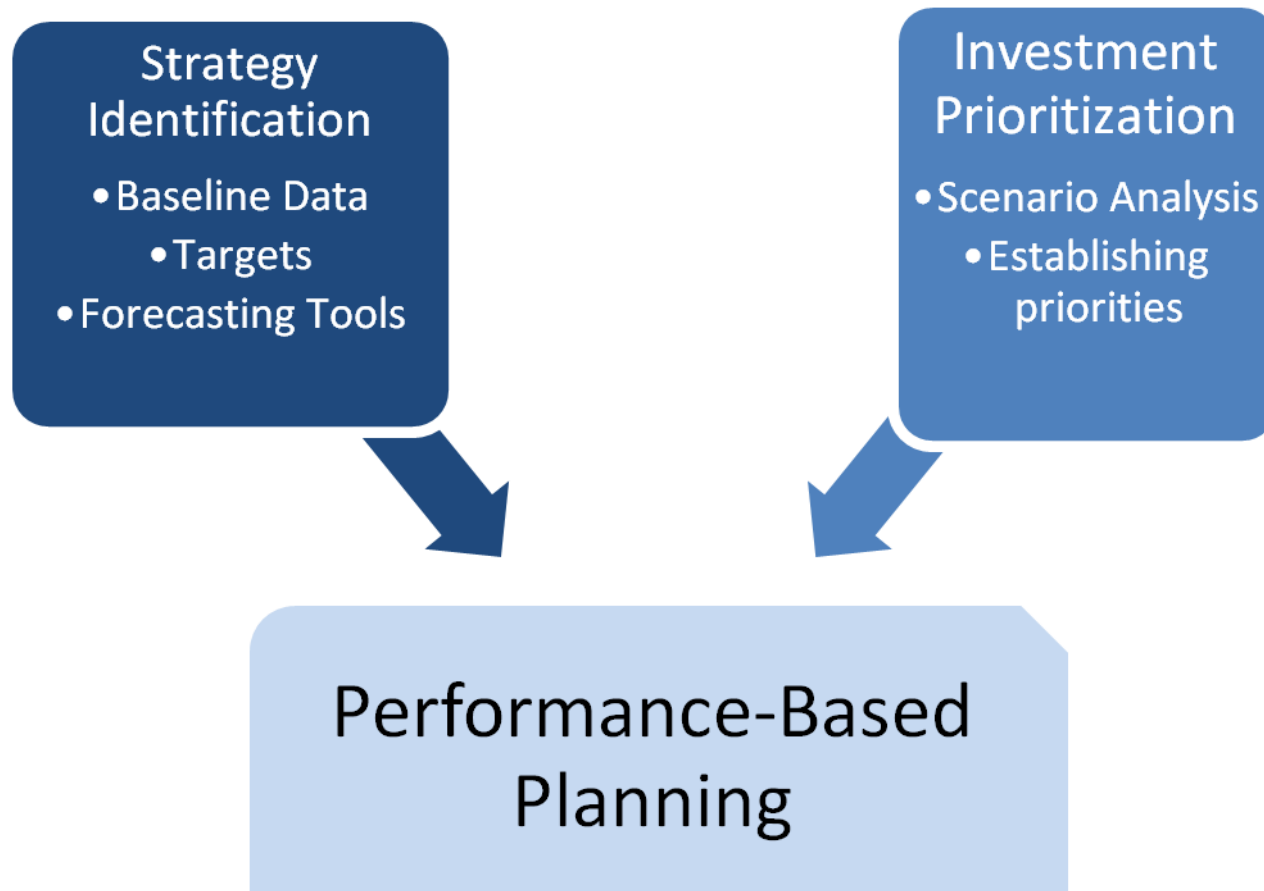
- Translates strategic direction into actions on the ground
- Process:
  - Identify focus areas based on performance trends
  - Develop strategies to address needs
  - Analyze alternative scenarios
- Leads to programming, where projects are selected



# ***Performance-Based Planning: Subcomponents***

---

- 3.1 Strategy Identification
- 3.2 Investment Prioritization



# Performance-Based Planning:

## PBPP and TPM

<b>Strategic Direction</b> <i>(Where do we want to go?)</i>	<ul style="list-style-type: none"><li>• Goals and Objectives</li><li>• Performance Measures</li></ul>
<b>Long-Range Planning (Analysis)</b> <i>(How are we going to get there?)</i>	<ul style="list-style-type: none"><li>• Identify Targets and Trends</li><li>• Identify Strategies</li><li>• Develop Strategy/Investment Priorities</li></ul>
<b>Programming</b> <i>(What will it take?)</i>	<ul style="list-style-type: none"><li>• Investment Plan</li><li>• Resource Allocation</li><li>• Program of Projects</li></ul>
<b>Implementation and Evaluation</b> <i>(How did we do?)</i>	<ul style="list-style-type: none"><li>• Reporting and Monitoring</li><li>• Evaluation</li></ul>



# ***Performance-Based Planning:***

---

## ***Performance Management Requirements***

**Coordination:** Based on the *cooperative development* of plans, programs and schedules

### **Documentation Required:**

- By State DOT, MPOs and public transportation providers
- Through specific *written provisions that address development and sharing of*
  - Performance data collection
  - Selection of performance targets
  - Performance target reporting





---

# ***Breakouts: Performance Based Planning***



---

# ***Breakout Exercise***

- Discuss **Performance Based Planning** maturity level
  - Questions in handout (Exercise A)
  - Use Capability Maturity Model table (Exercise A)
- Select facilitator, note taker, and presenter
- Mixed groups
- Report out: share highlights of discussion



---

# *Report Out*

- Share highlights of discussion
- 4 min per group

