

**Welcome to the New Performance Management Paradigm:
A World of Challenge and Opportunity**

Performance-Based Federal Highway Program

Federal Highway Administration

October 25-26, 2017



U.S. Department of Transportation
Federal Highway Administration



Your Go-To Resource



- Visit <http://www.fhwa.dot.gov/tpm/>
 - Informational Materials
 - Training
 - Technical Assistance
 - Peer Exchange Info
 - Effective Practices
 - Videos; and
 - MORE to Come.....

U.S. Department of Transportation
Federal Highway Administration

About Programs Resources Briefing Room Contact Search FHWA

Transportation Performance Management

TPM and MAP-21 Engagement Resources

Home / Programs / Transportation Performance Management

TPM Toolbox

Beta Release Website

This is a beta release website for the FHWA Toolbox.

Learn more about the TPM Toolbox

TPM Toolbox Public Beta: The TPM Toolbox is an online resource to assist agencies in learning about and implementing TPM practices. The Toolbox includes the TPM Guidebook and the TPM Capability Maturity Model (CMM), a self-assessment tool that identifies practical steps for an agency to improve its TPM capabilities.

Play Previous Next

Implementation

- What is TPM?
- National Goals
- MAP-21 Putting Performance into Action (.pdf, 1.3 mb)
- Implementation Schedule (.pdf, 0.1 mb)
- TPM Rulemakings
- Guidance

Engagement

- Rulemaking Stakeholder Engagement
- Reporting

Resources

- Apply for P2P Technical Assistance
- Noteworthy Practices
- Presentations and Webinars
- Publications
- Tools
- TPM Digest
- Training

Email Notification

Subscribe to email updates

Calendar

View the TPM calendar

Related Links

- FHWA/DOT TPM-related Links
- TPM External links

Contacts

- Susanna Hughes-Reck
Office of Transportation Performance Management
202-366-1549
E-mail: Susanna



Our Time Today



- TPM Professional Capacity Building Activities
 - Resources You Can Use
 - Specific Implementation Support



Strategic Approach



Define

- Partner Needs and Input
- Requirements Driven (Regulations and Guidance)
- Informational Materials

Develop

- Multi-Tier approach
- Flexible
- Responsive
- Technology Savvy
- Proven Effective Practices

Deliver

- Formal and Tailored Training
- Peer Dialogue and Exchange
- Technical Assistance
- Virtual Events
- Videos & Websites
- Tools

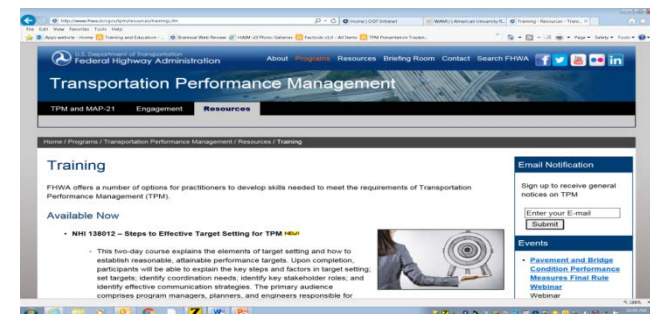


TPM Implementation Support: *Formal Training*



NHI In-Person Courses Available Now:

- Overview of MAP-21 TPM (w/ FAST Act Updates)
- TPM for Safety
- Performance-based Planning and Programming
- Steps to Effective Target Setting
- Data Management for TPM



TPM Implementation: Technical Assistance

Delivery Approaches

- Tailored Workshops/Webinars
- Videos
- Peer Exchanges/Peer Dialogue

Example Topics

- Strategic Direction/Scenario Analysis
- Data Management
- Analytical Tools
- Target Setting
- Coordination



TPM Implementation: Technical Assistance



National Webinars

- Final Rule Webinars
 - Recordings Available

- FHWA Let's Talk Performance Series
 - Topical Sessions on Key TPM Topics
 - TAMP and Risk Management (August 9, 2017)
 - Target Setting Coordination (June 2017)
 - Basics of Target Setting (July 2016)



TPM Implementation:

Technical Assistance

Formal Peer Exchange Programs

- Learn from DOT/MPO/Transit Peers
- Apply for:
 - FHWA TPM Professional Capacity Building Program
 - FHWA Transportation Planning Capacity Building Program
 - FHWA Scenario Planning Peer Exchange Workshop



TPM Implementation:

Assessment Workshops

TPM Capability Maturity Model (CMM)

- Workshop and Guidebook
- Self-Assessment Tool
- Other Assistance Available Upon Request



TPM Implementation: Informational Materials

Technical Advisories

- Asset Management Plan Q&A
- S/TIP Performance-Based Discussion
- LRTP System Performance Report
- Linking Targets to Long Term Expectations

Guidebooks and Effective Practices

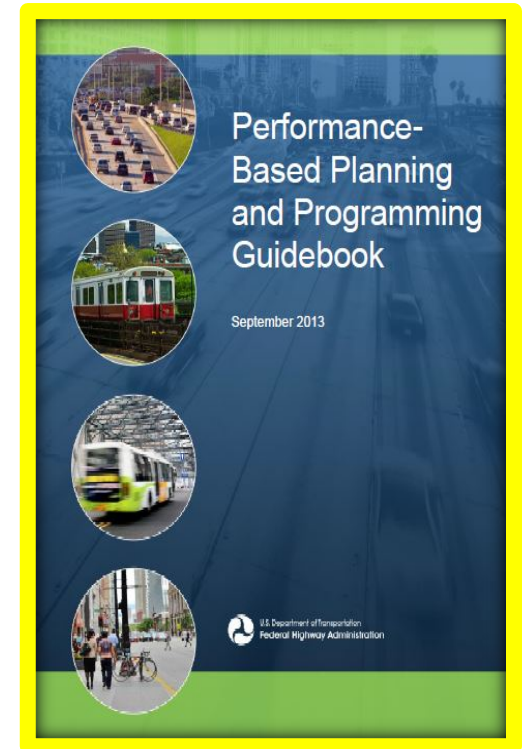
- Target Setting
- Investment Plans
- Freight Performance at Bottlenecks



Performance Based Planning and Programming Guidebook

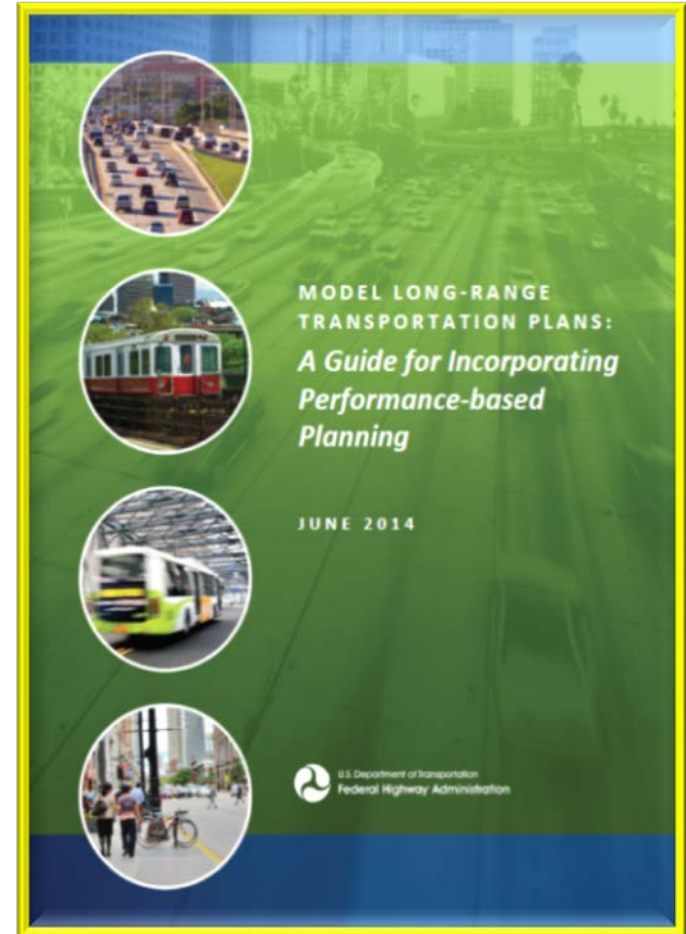


- Practical Resource Focused on PBPP Elements
- Highlights Effective Practices
 - State DOTs, MPOs, Transit Agencies
- Reviews Connections with Other State/Regional Plans/Processes
 - Examples:
 - Strategic Highway Safety Plan
 - CMP
 - Asset Management Plans



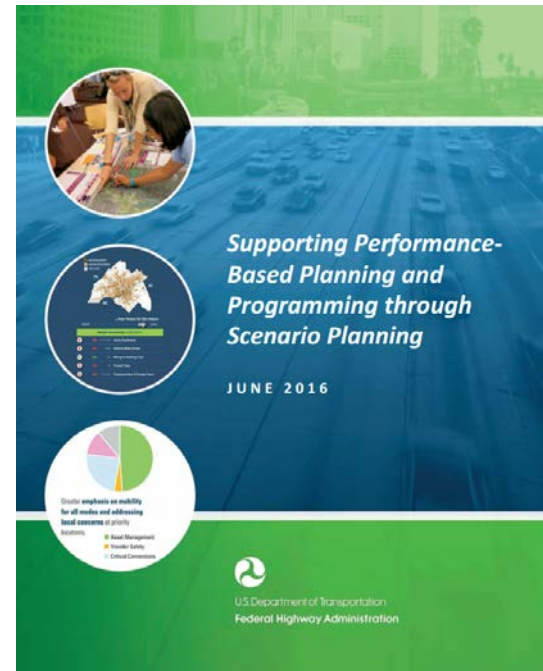
Model Long Range Plan: Guide for Incorporating PBPP

- Detailed Information About Developing a Performance-based Statewide Long-range Metropolitan Transportation Plan
- Especially Helpful for:
 - Performance Measures
 - Preferred Trends and Targets
 - System Performance Report



Supporting PBPP Through Scenario Planning

- Array of Scenario Analytical Tools to Be Used at Various PBPP Steps
- Good Case Studies!



Available at

<http://bit.ly/2qaNGi3>

TPM Implementation Workshop Material



<https://www.fhwa.dot.gov/tpm/workshop/>

AM Workshop Notes

- This workshop is for those with knowledge of Asset Management and includes hands-on break-out groups which include analysis pertaining to life-cycle planning, risk, and development of financial plans.
- We recommend that participants take the following NHI web-based training courses prior to participation in the workshop:
 - [NHI 136106C, Introduction to a Transportation Asset Management Plan](#)
 - [NHI 136002A, Introduction to Financial Planning for Asset Management](#)

Hotels

Residence Inn Phoenix Downtown
132 South Central Avenue
Phoenix AZ 85003

Presentations

- [Asset Management Workshop](#)
 - [Interim Guidance: Incorporating Risk Management into Transportation Asset Management Plans](#)
 - [Interim Guidance: Developing TAMP Financial Plans](#)
 - [Interim Guidance: Using a Life Cycle Planning Process to Support Asset Management](#)
 - [Asset Management](#) (.pdf, 1.9 mb)
 - [Asset Management Workshop Participant Workbook](#) (.pdf, 1.5 mb)
- [Opening Plenary - Putting the Pieces Together](#) (.pdf, 0.7 mb)
- [Planning](#) (.pdf, 0.3 mb)
- [PM2 - Bridge](#) (.pdf, 2.5 mb)
- [PM3 - Freight](#) (.pdf, 1 mb)
- [PM3 - Reliability and PHED Measures](#) (.pdf, 0.8 mb)
- [PM 3 - CMAQ: On-Road Mobile Emissions and Percent of Non-SOV Travel](#) (.pdf, 0.6 mb)
- [PM 3 - CMAQ: On-Road Mobile Emissions and Percent of Non-SOV Travel Worksheet](#) (.pdf, 0.1 mb)
- [PM3 - CMAQ Non-SOV Travel Worksheet](#) (.docx)
- [PM2 - Pavements for "Overview of Performance Measures: Pavement Condition to Assess the National Highway Performance Program"](#) (.pdf, 5 mb)
 - [Handouts](#) (.pdf, 1 mb)
- [Closing](#) (.pdf, 3 mb)

Registration

- [Please contact your local Division Office](#)



U.S. Department of Transportation
Federal Highway Administration

About Programs Resources Briefing Room Contact Search FHWA

Facebook Twitter YouTube Instagram LinkedIn

Transportation Performance Management

Implementation Engagement Resources

Home / Programs / Transportation Performance Management / Frequently Asked Questions

Frequently Asked Questions

- [Performance Period](#)
- [Bridge](#)
- [Pavement](#)
- [Travel Time Reliability](#)
- [Freight Movement](#)
- [CMAQ On-Road Mobile Source Emissions: Total Emission Reductions](#)
- [CMAQ Traffic Congestion Annual Hours of Peak Hour Excessive Delay Per Capita](#)
- [CMAQ Traffic Congestion: Percent of Non-Single Occupancy Vehicle \(SOV\) Travel](#)
- [GHG Measure-Effective Date and Repeal Notice](#)

Other FAQs

- [Asset Management](#)
- [Q & A on Safety Performance Measures Final Rule](#)

Performance Period

Q. What are the dates of the first four-year performance period?

A. The first performance period begins **January 1, 2018**, and ends on **December 31, 2021** with the exception of the CMAQ emissions reduction measure. For that measure, the first performance period begins on **October 1, 2017**, and ends on **September 30, 2021**.

Q. When is this period's State DOT baseline performance period report due?

A. The baseline report for the first performance period is due **October 1, 2018**, for all measures under this final rule.

[[Top](#)]

Bridge

Q. To what bridges does the rule apply?

A. The final rule applies to all bridges carrying the NHS, including bridge on- and off-ramps connected to the NHS.

Q. What are the bridge condition performance measures?

Email Notification

Sign up to receive general notices on TPM

Enter your E-mail

Submit

Events

- [Pavement Management Quarterly Webinar](#)
Webinar
October 19, 2017
2:00-4:00 Eastern
- [View all Upcoming Events](#)

Related Links

- [TPM External links](#)

Contact

- Bill Bolles**
[Office of Transportation Performance Management](#)
202-366-8027
[E-mail Bill](#)



TPM Examples

https://www.fhwa.dot.gov/tpm/links_external.cfm



U.S. Department of Transportation
Federal Highway Administration

About Programs Resources Briefing Room Contact Search FHWA

f t y o i n

Transportation Performance Management

Implementation Engagement Resources

Home / Programs / Transportation Performance Management / External TPM-related Links

External TPM-related Links

[TPM Dashboards](#) | [Performance Measures and Reports](#) | [Planning and Asset Management](#) | [Safety and Mobility](#) | [Research and Innovation](#) | [Education, Events, Workshops, and Webinars](#) | [Washington State DOT MAP-21 Resources](#)

TPM Portal

- [TPM Portal](#)

TPM Dashboards

- [Alaska DOT Dashboard](#)
- [Chicago DOT Dashboard](#)
- [City of Boston Dashboard](#)
- [City of Fort Collins](#)
- [City of Phoenix Dashboard](#)
- [City of Seattle Dashboard](#)
- [City of Williamsburg, VA Dashboard](#)
- [Colorado DOT Dashboard](#)
- [Council of State Governments Dashboard](#)
- [Delaware DOT Dashboard](#)
- [Idaho DOT Dashboard](#)
- [Iowa DOT Dashboard](#)
- [Kane County Transportation Dashboard](#)
- [Kansas City Dashboard](#)
- [Michigan DOT Scorecard Performance Summary](#)
- [Michigan Transportation Dashboard](#)
- [New Hampshire DOT Dashboard](#)
- [North Carolina DOT Dashboard](#)
- [Ohio DOT Dashboard](#)
- [Oregon DOT Dashboard](#)
- [South Carolina DOT Dashboard](#)
- [State of Michigan Dashboard](#)
- [Virginia DOT Dashboard](#)

Email Notification

Sign up to receive general notices on TPM

Enter your E-mail

Events

- [Pavement Management Quarterly Webinar](#)
Webinar
October 19, 2017
2:00-4:00 Eastern
- [View all Upcoming Events](#)

Related Links

- [FHWA/DOT TPM-related Links](#)

Contact

- **Bill Bolles**
[Office of Transportation Performance Management](#)
202-366-8027
[E-mail Bill](#)





AASHTO Transportation Management Hub

The Transportation Management Hub provides access to a suite of transportation management products: The AASHTO Transportation Performance Management Portal, The AASHTO Transportation Asset Management Portal, and the AASHTO Enterprise Risk Management Portal.

Performance Management

Asset Management

Risk Management



Transportation Management Web Portals



AASHTO Transportation Performance Management Portal

The TPM Portal was developed to showcase best practices, foster collaboration, and serve as a repository for TPM resources.

[Access the TPM Portal...](#)



AASHTO Transportation Asset Management Portal

The TAM Portal is a searchable database of links to a wide range of resources related to transportation asset management.

[Access the TAM Portal...](#)



AASHTO Enterprise Risk Management Portal

The ERM Portal is a basic risk management resource library for transportation practitioners.

[Access the ERM Portal...](#)





- Introduction ▲
- Component 1:
Strategic Direction
- Component 2:
Target Setting
- Component 3:
Performance-Based
Planning
- Component 4:
Performance-Based
Programming
- Component 5:
Monitoring and
Adjustment
- Component 6:
Reporting and
Communication
- Component A:
Organization and
Culture
- Component B:
External
Collaboration and
Coordination
- Component C: Data
Management
- Component D: Data
Usability and
Analysis ▼

[Home](#) / [Guidebook](#)

TPM Guidebook

Building upon over a decade of transportation performance management research and agency practices, this guidebook introduces a comprehensive **TPM Framework**. Each numbered and lettered component below is discussed in a dedicated chapter within the guidebook. Summary factsheets are also available for each component. Each Guidebook chapter is also available to download as a PDF file.

Introduction. TPM Framework

Transportation Performance Management (TPM) is a strategic approach that uses system information to make investment and policy decisions to achieve performance goals.



Publications

Filters

Components

- Component 1: Strategic Direction (32)
- Component 2: Target Setting (35)
- Component 3: Performance-Based Planning (24)
- Component 4: Performance-Based Programming (19)
- Component 5: Monitoring and Adjustment (29)
- Component 6: Reporting and Communication (25)
- Component A: Organization and Culture (26)
- Component B: External Collaboration (32)
- Component C: Data Management (42)
- Component D: Data Usability and Analysis Capabilities (23)

TPM Areas

- Environment (1)
- General (688)

Matching Publications

1. FHWA Index of Legislation, Regulations, and Guidance
2. 49 CFR 613 – PLANNING ASSISTANCE AND STANDARDS
3. 23 CFR 450.210 – COORDINATION.
4. Transportation Article Section 2-103.1 of the Annotated Code of Maryland
5. Strategic Transportation Investments
6. 23 U.S.C. 135 – STATEWIDE TRANSPORTATION PLANNING
7. 23 U.S.C. 150 – REPEALED. PUB. L. 105-178, TITLE I, §1103(L)(5), AS ADDED PUB. L. 105-206, TITLE IX, §9002(C)(1), JULY 22, 1998, 112 STAT. 834
8. Performance Measurement: Getting Results
9. Interim Guidance on National Performance Measure Development
10. Measuring Performance among State DOTs: Sharing Good Practices
11. Measuring Performance Among State DOTs
12. MN TZD Mission, Goals, & Values
13. Target-Setting Workshop
14. SCOPM Task Force Findings on MAP-21 Performance Measure Target-Setting
15. About HB2
16. HB2 Implementation Policy Guide
17. Keeping Score for the Game our Customers Care About
18. Traffic Flow Data Program R009, Agreement for Use of Data
19. Vital Signs – Greenhouse Gas Emissions
20. Metro Regional Centerline Collaborative



The New Performance Management Paradigm: A World of Challenge and Opportunity

Questions?



Thank You

